

# **Design and Execution Barbados Survey of Living Conditions 2016-2017**

**Mr. Aubrey Browne (BSS)**

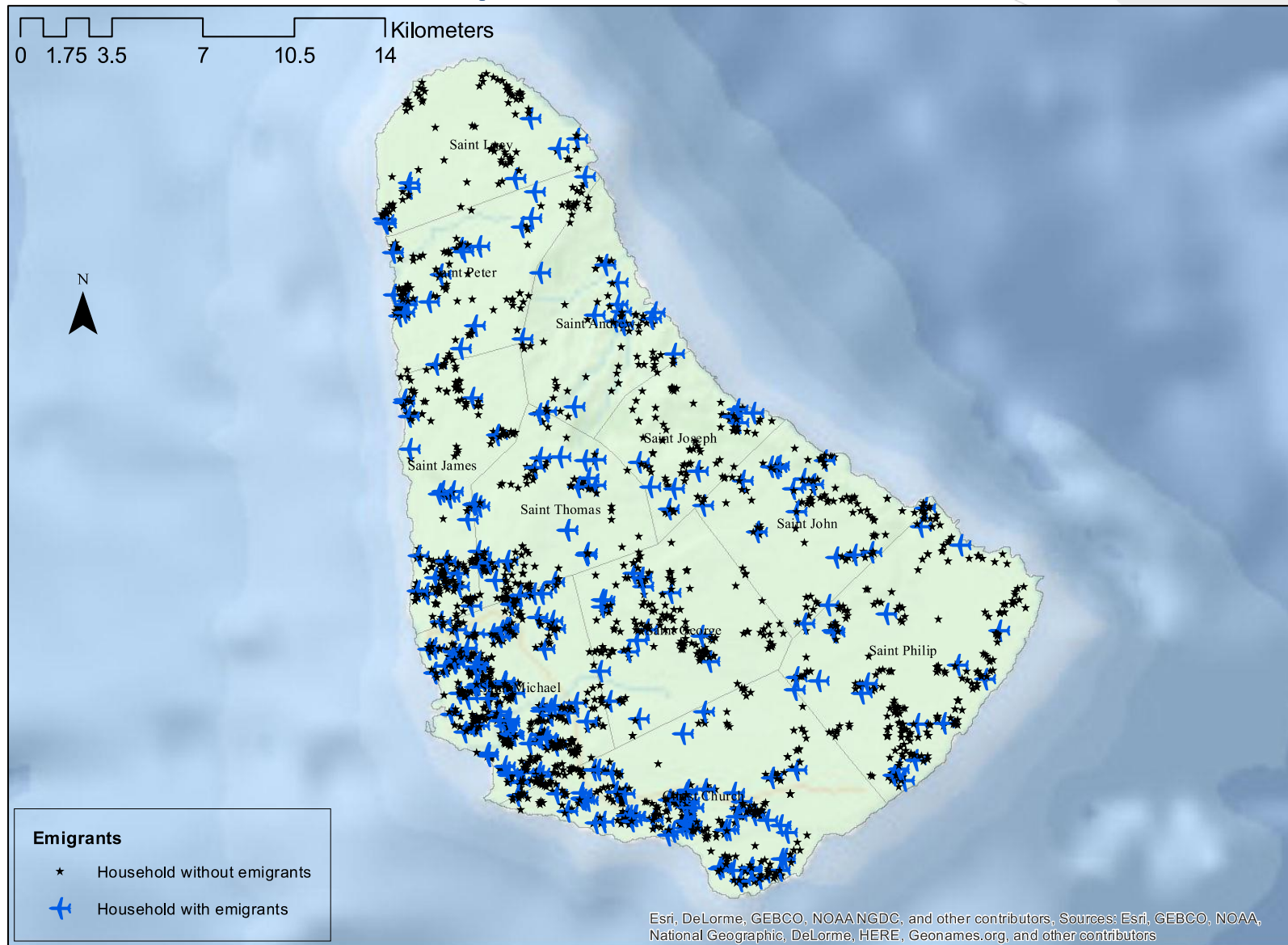
**September 2017**



# Survey Design

- A joint effort of
  - The Barbados Statistical Service
  - The Inter-American Development Bank
  - With technical assistance from Sistemas Integrales Ltd.
- Nationally representative sample
  - Two-stage sampling: Enumeration Districts + Households
  - Precision at the Parish level (7,098 individuals / 2,508 households)
  - Representative of an entire calendar year (national sample divided into 12 random monthly sub-samples): very important to account for seasonal intra-year variation
- Wide coverage of main indicators of living conditions
  - Education, Health, Fertility, and Early Childhood Development
  - Labour Supply and Farming
  - Housing, Personal Safety, and Migration
  - Consumption patterns, income and expenditures

# Sample Distribution



11% of households have at least one emigrant

# Survey Execution

- Field Team (housed at BSS)
  - 1 Project Manager
  - 3 Supervisors
  - 1 Expeditor
  - 12 Interviewers
- Interviews
  - 12 consecutive months (February 2016 to January 2017)
  - Individual interviews to all household members
  - Face to Face (No proxy respondents accepted)
  - Anthropometric measurement of children 0-5 years old
- Data entry and monitoring
  - Data entry in the field - real time centralized reception of data in a secured server
  - Real time monitoring of interviewers performance
  - Face to Face random checks of interviewing quality (Supervisors)
  - Prompt detection of problems during execution and speedy correction (no post-survey “data cleaning”)



Face-to-Face Interviews



Anthropometric Measurement

