

**Guyana Bureau of Statistics**

**Inter-American Development Bank**

**Guyana Labor Force Survey - Quarter 4 2017**

**Methodological Report**

**Sistemas Integrales, January 2018**

## Contents

Introduction.....	3
Sample design.....	4
<i>GLFS rotation scheme</i> .....	5
Estimation and sampling error.....	7
Survey tools and methods .....	9
<i>Questionnaires</i> .....	9
<i>Restricted and Public use datasets – Anonymization</i> .....	10
<i>Coding of industry and occupation</i> .....	10
<i>Individual panel identifier</i> .....	11
Fieldwork organization .....	12
The Comprehensive Survey Quality Assurance (CSQA) framework.....	13
1. <i>Integration of computer quality controls to fieldwork</i> .....	13
2. <i>Central monitoring of data quality indicators</i> .....	13
3. <i>Direct fieldwork supervision through check-up visits</i> .....	17
4. <i>Auditing of randomized recording and double data entry</i> .....	17
Annex 1. Stata syntax for weighted estimates and sampling error estimation .....	19
Annex 2. GLFS codebook.....	21
<i>Individuals dataset</i> .....	21
<i>Emigrants dataset</i> .....	30
Annex 3. GLFS electronic questionnaires .....	32

## Introduction

The Guyana Labor Force Survey (GLFS) is a joint effort of the Guyana Bureau of Statistics (BOS) and the Inter-American Development Bank (IDB) that intends to generate regular and timely data on the most important dimensions of the labor market in Guyana in order to support the design, monitoring and evaluation of labor policy. It provides data on employment, unemployment, underemployment, employment informality, population not in the labor force, hours of work, work and non-work income, as well as on multiple demographic characteristics. Also, the GLFS collects indirect information on emigrants, provided by the surveyed households.

The data collected every quarter are used to compute a set of standard labor market indicators such as the employment-population ratio, the unemployment rate and the participation rate, as well as many other employment indicators broken down by industry, occupation, large geographic areas and demographic characteristics like gender, age and ethnic group.

The GLFS is a continuous survey with quarterly data deliveries. Its second round was conducted in the fourth quarter of 2017 and visited a probability sample of 3,783 households and 13,853 individuals over a 12-week period, from October 5<sup>th</sup> through December 27<sup>th</sup>. It was fielded by 11 teams formed by a total of 31 interviewers and 11 supervisors headed by a Project Manager based at BOS headquarters, with technical support from Sistemas Integrales.

This report describes the main methodological aspects of the survey – the sample design and the pertaining estimation procedures, the topics covered by the questionnaires, and the organization and quality assurance of fieldwork – and presents the content and organization of the resulting datasets that will support numerous forthcoming analytical activities.

## GLFS sample design

The GLFS is a continuous nationwide survey started in July 2017. Following the conventional practice for population surveys, its target population includes all persons who reside in households and excludes the institutionalized population, i.e. persons living in prisons, nursing homes, long-term or dependent care facilities, long-term mining camps or full-time members of the armed forces. According to the 2012 Population and Housing Census, Guyana had a household population of 723,181 persons living in 204,625 households.

The GLFS is run every quarter of every year on a continuous basis, and is representative of four geographic domains: a) the entire national territory; b) the coastal urban areas; c) the coastal rural areas and d) the interior. It is not representative at the region level, except for Region 4 where the country capital city, Georgetown, is located.

The GLFS sample includes approximately 4,000 households every quarter, resulting in a total of about 15,000 individuals out of which about 11,000 are 15 years old or above. This sample is based on a stratified two-stage probability design. Each quarterly sample spreads over 12 consecutive weeks and is distributed across 15 strata corresponding to urban, rural, coastal and interior areas in the 10 Guyana regions. Furthermore, in order to attain a uniform spatial-time representativeness the GLFS quarterly sample is allocated into 12 weekly replicates, which means that the overall quarterly sample is achieved through the aggregation of 12 smaller samples, called replicates, that spread throughout the entire country and that are nationally representative by themselves.

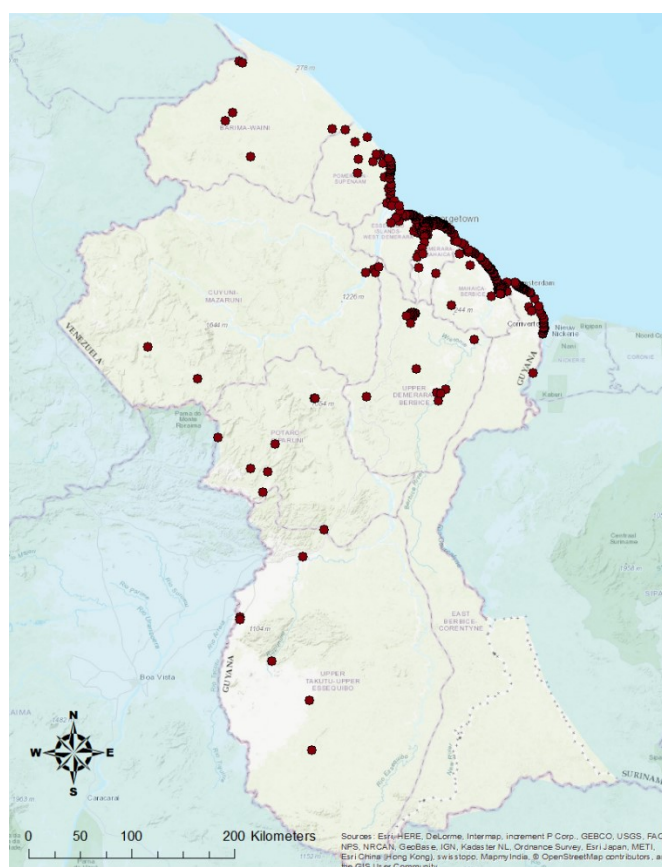
The **first sampling stage** is formed by 360 Primary Sampling Units (PSUs), which are groups of Census Enumeration Districts (EDs). The sample of PSUs was initially allocated into the 15 strata. Then, using the 2012 Census as a sample frame, PSUs were selected systematically within each stratum with probabilities proportional to their size, using the number of households reported by the Census as measure of size. Figure 1 shows the spatial distribution of the 360 selected PSUs.

For the **second sampling stage** all households in every selected PSU were first listed<sup>1</sup> over the months prior to the survey start. Once the listing operation concluded, the households registered in each PSU were randomly grouped in groups of four households called **blocks**, and four blocks were selected with equal probabilities in each PSU<sup>2</sup> each quarter. Finally, within the interviewed households, demographic information was collected for all household members and labor force information was registered for members 15 years of age and above.

---

<sup>1</sup> The household listing operation was conducted between December 2016 and April 2017 in order to generate an updated sampling frame for the second sampling stage.

<sup>2</sup> Three of the households in each block were designated as the *target* households. The fourth household was a *backup* that could be used if exceptional circumstances (such as the dwelling being empty throughout the full week of data collection in the cluster) made it not possible to interview one of the target households.

**Figure 1: GLFS selected Primary Sampling Units**

To account for the unequal inclusion probabilities, base weights were computed in accordance with the GLFS sample design. Once the quarter was finalized the base weights were adjusted for nonresponse<sup>3</sup> and a poststratification was applied in accordance with overall regional population projections developed by the Guyana BOS.

### ***GLFS rotation scheme***

A required feature of the GLFS – as of other labor force surveys in other countries – is the capability of obtaining accurate estimates of the change in Labor Market Indicators (LMIs) over time, and thus monitor their evolution. In other words, the GLFS should be able to determine, for example, whether a particular decrease or increase in the unemployment rate is statistically significant, and it should ideally be able to detect even small changes.

To measure change over time more precisely, the GLFS sample design includes rotating panels. From one quarter to the following all PSUs are kept the same, but some households within each PSU are kept in the sample whereas the rest are replaced by new households. As a result, one part of the sample – the panel

<sup>3</sup> Nonresponse levels were kept low throughout the entire fieldwork. The unweighted nonresponse rate in the fourth quarter of 2017 was 10.1%, composed of 3.4% Refusals, 4.1% No contacts and 2.6% Other reasons.

– overlaps in both quarters. Under these conditions, the design-based variance of the estimator of change  $\hat{\Delta}$  for the indicator of interest is given by

$$\text{var}(\hat{\Delta}) = \text{var}(\hat{\theta}_1) + \text{var}(\hat{\theta}_2) - 2 \text{corr}(\hat{\theta}_1, \hat{\theta}_2) \sqrt{\text{var}(\hat{\theta}_1) \text{var}(\hat{\theta}_2)}$$

where

$\hat{\theta}_1$  is the cross-sectional estimator of the indicator of interest in quarter 1

$\hat{\theta}_2$  is the cross-sectional estimator of the indicator of interest in quarter 2, and

$\hat{\Delta}$  is the estimator of net change between  $\hat{\theta}_1$  and  $\hat{\theta}_2$

The above expression shows how the sampling variance of the estimator of change is reduced – and thus the precision of the change estimate is increased – due to the correlation between  $\hat{\theta}_1$  and  $\hat{\theta}_2$ , which is determined by the magnitude of the overlap between both successive samples. Thus, the larger the overlap between the two samples in two successive quarters, the larger the correlation  $\text{corr}(\hat{\theta}_1, \hat{\theta}_2)$  and the larger the precision of the change estimate. However, even if a complete overlap between successive samples would yield the largest precision of the change estimate, this is not used in practice when the objective is to implement numerous successive survey rounds since it would result in increasingly high levels of attrition as time goes by.

This is why the GLFS implements a *rotation scheme* – or *rotating panel* – with the purpose of generating successive samples that overlap partially. Different rotation schemes, which apply different overlap patterns, are often used in population surveys when the main objectives are both cross-sectional estimates and short-term estimates of change. The specific type of rotation scheme and its corresponding overlap pattern have a direct effect on:

- The precision of the change estimate between two different periods,
- The precision of the estimates obtained by aggregating samples over time, and
- Attrition due to respondent's fatigue.

Consistently with the practice in other Caribbean countries, the GLFS adopted a rotational scheme that maximizes simultaneously the quarter-to-quarter and the year-to-year overlaps and thus permits to obtain more precise estimates of change between consecutive quarters and between a quarter and the same quarter in the following year. 50% of the sample in every quarter is the same as in the previous quarter, and 100% is the same as in the same quarter of the previous year. As a result, the precision of the estimates of change quarter to quarter and year to year are simultaneously optimized. This is achieved in practice by way of rotating the four blocks (each composed of three target households and one backup household, as explained above) included in the sample each quarter, as shown in Figure 2 below:

**Figure 2: GLFS rotational scheme**

Year	Quarter	Bocks included in the sample			
2017	3	1	2	3	4
2017	4	5	6	3	4
2018	1	5	6	7	8
2018	2	1	2	7	8
2018	3	1	2	3	4
2018	4	5	6	3	4
2019	1	5	6	7	8
2019	2	(same as in Quarter 2 of 2018, etc.)			

## Estimation and sampling error

When estimating standard errors and confidence intervals for statistics such as means, proportions and ratios, as well as linear and non-linear regression parameters, all GLFS complex sample design features (stratification, clustering, weighting due to unequal inclusion probabilities and nonresponse adjustments) need to be accounted for. If the complex sample design is not accounted for, standard statistical software will assume that the sample is a simple random sample (SRS), which would result in biased estimates and unrealistically low sampling variances. Hence, standard errors would be understated, confidence intervals would be narrower and test statistics would be biased.

The two most usual approaches to estimating sampling errors for complex sample data are through 1) the Taylor Series Linearization (TSL) of the estimator and the corresponding approximation to its variance, or through 2) the use of resampling variance estimation techniques such as balanced repeated Replication (BRR), jackknife repeated replication (JRR) and bootstrap. Stata and other statistical software packages use the TSL method as the default for estimating sampling errors (expressed in the sampling variances, standard errors, coefficients of variation and confidence intervals) for complex sample data. Annex 1 indicates the Stata syntax that should be used when analyzing GLFS data to account for its sample design features and weighting. Table 1 presents the estimates, standard errors, 95% confidence intervals and coefficients of variation for three key GLFS indicators for quarter 4 and quarter 3, 2017.

**Table 1. GLFS Q4 and Q3 2017. Estimates and sampling errors for selected indicators.**

Indicator	Quarter	Estimate	Standard error	95% confidence interval	Coefficient of variation (%)
Employment-population ratio (%)	Q4 2017	47.89	0.64	(46.63 , 49.16)	1.34
	Q3 2017	49.21	0.65	(47.94 , 50.48)	1.31
Unemployment rate (%)	Q4 2017	12.19	0.55	(11.14 , 13.32)	4.55
	Q3 2017	12.04	0.52	(11.06 , 13.11)	4.33
Average hours usually worked per week in the main job	Q4 2017	45.65	0.38	(44.90 , 46.41)	0.84
	Q3 2017	46.13	0.39	(45.37 , 46.90)	0.84

All three indicators show a slight change in their point estimates between quarters 3 and 4. However, when testing these changes it is confirmed that none of them is statistically significant, which means that no real change is detected. Table 2 displays the estimated change between Q3 and Q4 for the three indicators, the standard error and p-value corresponding to these change estimates, and their 95% confidence intervals.

**Table 2. Test of differences between Q4 and Q3 2017 for selected GLFS indicators.**

Indicator	Q4 - Q3	Standard error	t	P> t	95% confidence interval
Employment-population ratio	-1.316	0.7994	-1.65	0.101	(-2.8886 , 0.2564)
Unemployment rate	0.14108	0.6708	0.21	0.834	(-1.1784 , 1.4606)
Average hours usually worked per week in the main job	-0.4811	0.4912	-0.98	0.328	(-1.4472 , 0.4849)

Annex 1 includes the Stata syntax that should be used to test the change of an indicator between quarters, in order to account for the sample design features and the sample overlapping.



## Survey tools and methods

The core objective of the GLFS is to produce labor force statistics for the population of Guyana. In addition, the survey captures information about basic demographic characteristics and emigrants. Demographics and educational features are collected for all individuals irrespective of their age, whereas labor force characteristics are measured for individuals 15 years of age and over, in accordance with the working-age population definition used in Guyana. Data on emigrants are obtained indirectly through the interviewed respondents and refer to those individuals who used to reside in the surveyed households but have been living abroad for over 6 months at the time of the interview<sup>4</sup>.

### Questionnaires

A Household Questionnaire (HQ) and an Individual Questionnaire (IQ) were designed, piloted and programmed into two CAPI (Computer Assisted Personal Interviewing) applications that were installed in the hand-held devices used by the interviewers in face-to-face interviews.

The Household Questionnaire collects information on the following topics from all household members irrespective of their age:

- Demographic characteristics
- Recent migration (internal and international)
- Education
- Emigrants
  - Basic demographics
  - Current country of residence
  - Education
  - Labor status before leaving Guyana
  - Current main activity

The Individual Questionnaire focuses on the labor characteristics of the population 15 years old and above:

- Vocational training
- Labor force status
- Status in employment
- Hours worked
- Time-related underemployment
- Informality
- Industry
- Occupation
- Unemployment
- Main features of the last job
- Work earnings
- Non-work income

The two full questionnaires are presented in Annex 3.

---

<sup>4</sup> The GLFS data on emigrants should be interpreted with caution since they only refer to those emigrants who used to live in a household that still exists in Guyana, i.e. the GLFS does not capture any data about those emigrants that moved out of the country along with their entire household.

## **Datasets**

The GLFS Quarter 4 2017 released two datasets.

- GLFS\_174\_ind: contains all the data recorded from the individuals living in the surveyed households.
- GLFS\_174\_emig: contains all the data collected about the former household members who have been living abroad for over 6 months.

The GLFS codebook with the list and characteristics of all variables in the datasets is included as Annex 2.

### ***Restricted and Public use datasets – Anonymization***

The Guyana Bureau of Statistics is prohibited by law from releasing any data that would give information that relates to any identifiable person. This is why each of the GLFS data files exists in two different versions: a “Restricted” version that contains all the variables included in the questionnaire; and a “Public” version, from which certain variables (such as the respondent names, addresses, telephone numbers and household geocodes) have been excluded in order to prevent the disclosure of identifiable data and thus guarantee statistical confidentiality. Both versions include the weights and sample design variables required for the analyses

The GLFS registers the geocodes of every interviewed household, which are only included in the Restricted version of the datasets. However, both Restricted and Public versions include the geocodes of the centroids of the PSUs where the sample households are located.

### ***Coding of industry and occupation***

The vast majority of the categorical questions in the GLFS are pre-coded. The only exceptions are the codes of industry and occupation.

The coding of industrial activities and occupations is generally considered a very specialized task that requires years of experience and cannot be entrusted to survey fieldworkers. In fact, the 4-digit International Standard Industrial Classification of All Economic Activities (ISIC) and the International Standard Classification of Occupations (ISCO) have hundreds of categories and their interpretation is far from trivial. For this reason, statistical agencies generally ask the interviewers to simply write down detailed descriptions in the questionnaire and have a professional coder provide the codes at the central offices at a later stage. Unfortunately, this can have an impact on the timely availability of the survey data.

The GLFS interviewers were asked to write down detailed descriptions on the questionnaire, as interviewers in other surveys usually do. In addition, they were also asked to provide a code, using the ISIC and ISCO<sup>5</sup> tables embedded in the GLFS CAPI application by means of a built-in phonetic search engine. All the interviews fulfilled during a survey week were then transferred to the survey server at the end of that week, and the ISIC and ISCO codes entered by the interviewers in the field were assessed by

---

<sup>5</sup> The ISIC Rev. 4 and the ISCO-08 were used. Interviewers attended specific sessions on the coding of industries and occupations as part of their training before the survey start.

two coders at the BOS offices on a continuous basis. Whenever a code entered by an interviewer did not correspond to the full description registered by that interviewer, the code was rectified by the coders.

***Individual panel identifier***

All three versions of the *GLFS\_174\_ind* dataset include a numeric panel identifier (variable *panelid*) for each individual living in each sample household, which allows for matching the individuals in the household along the rotating panels in successive quarters.

## Fieldwork organization

The survey is fielded by a managing team composed of one manager and two assistants, eleven supervisors and thirty-one interviewers organized in eleven field teams. Each interviewer is responsible for visiting one PSU with 12 sample households each week, over the 12 weeks of each quarter. Having the interviewers' territories overlap facilitates fieldwork management and quality assurance (see the *Quality Assurance* section below).

**Interviewing.** In many Labor Force Surveys it is usually permitted to collect the data for all household members by interviewing one sole member who answers on behalf of them, which of course entails several validity issues, especially for some specific labor-related questions. A key feature of the GLFS's fieldwork is that no proxy reporting is permitted, i.e. each member is asked to answer personally the questions related to his/her individual status. The only exceptions are children below 15 years of age, in which case an adult in charge must respond, and household members who are not present at the household throughout the survey week because of travel reasons out of the city or town of residence. As a result, interviewers usually have to make several appointments with different household members on different days and times to collect all the information required.

**Supervisors.** Each supervisor is in charge of overseeing the interviewers in his/her team, give them the necessary support and assure the quality of the work, primarily by re-visiting the interviewed households. He/she is also responsible of verifying and signing off the Final Result of each sample household assigned to the interviewers in his/her team and of personally uploading the data collected by the interviewers to the survey server.

## The Comprehensive Survey Quality Assurance (CSQA) framework

All the data collected by the GLFS is subject to the Comprehensive Survey Quality Assurance process, which is built on four successive and linked stages: integration of computer quality controls to fieldwork, central monitoring of data quality indicators, in-site fieldwork supervision through double-blind check-up visits, and systematic auditing of randomized interview voice recordings with double data entry.

### 1. *Integration of computer quality controls to fieldwork*

The CAPI applications used to collect the survey data include a set of built-in consistency checks whose purpose is to alert the interviewer of possible mistakes or inconsistencies while registering responses so that the identified inconsistencies can be solved by direct verification with the respondent. All the data are subjected to three types of checks while being entered: range checks, skip patterns and consistency checks.

- a. *Range checks* are intended to ensure that every variable in the survey contains only data within a limited domain of valid values. Categorical variables should take on only defined values and any other value is flagged as an error. Chronological variables should contain valid dates and numeric variables are verified to lie within prescribed minimum and maximum values. If the error is merely typographical, the interviewer who enters the data can correct it immediately. However, the data entry program allows the interviewer to enter an out-of-range value if it correctly reflects what has been observed and is not due to a typographical error.
- b. *Skip patterns*. The CAPI applications include all the skip patterns corresponding to specific questions. Thus, the applications verify that the right questions are asked from each respondent depending on his or her characteristics or on the answer given to previews questions.
- c. *Consistency checks* verify that the answer to one question is consistent with the answers to other questions.

### 2. *Central monitoring of data quality indicators (DQIs)*

On top of the computer quality checks carried out during the data entry, which focus on each specific interview, it is also necessary to monitor the overall work being done by all the interviewers together. To this purpose, the whole package of information that is weekly uploaded from the field to the survey server is centrally processed by the managing team located at the BOS offices. This permits to assess the quality of the work being done by each interviewer by comparing the data from all the different interviewers.

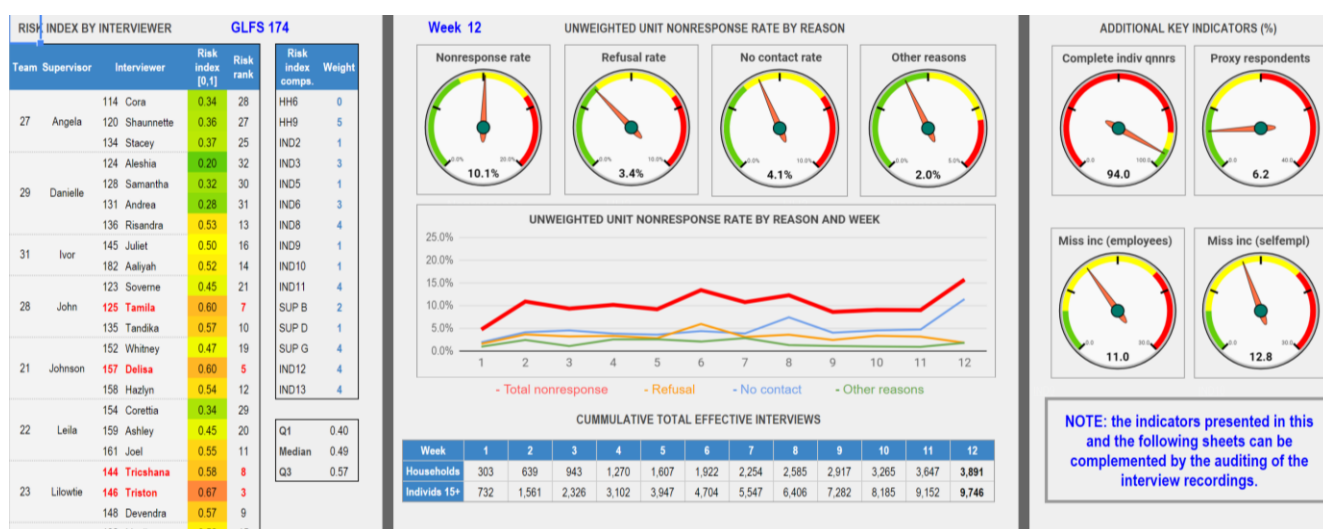
The managing team analyzes a set of over twenty data quality indicators (DQIs) every week on an interviewer basis and decides whether special supervision is needed on any particular interviewer whose work appears to be inadequate, or whether new and more precise instructions should be given. Thus, data monitoring provides early warnings so that the necessary corrective actions can be carried out promptly.

Monitoring of DQIs implies very active survey management and requires that all the data collected in the field be immediately transferred to the survey server on a continuous basis and throughout the entire fieldwork period. The GLFS DQIs Dashboard for the fourth quarter of 2017 is presented below, along with an excerpt of some specific DQIs and their trend over the 12 weeks of fieldwork.

### The GLFS DQIs Dashboard

The DQIs Dashboard is built on the more than 20 monitored DQIs and delivers a quick summary of the key issues related to data quality assurance. For example, it shows how many household and individual interviews have been accomplished at the end of each week and allows to have a precise picture of unit nonresponse and its components, as well as of item nonresponse (missing values) for relevant study variables.

One key feature is the Interviewer Risk Index, a composite indicator that grades the overall performance of all the interviewers on the basis on their performance in specific DQIs which are differentially weighted. The Risk Index permits to rank the interviewers and rapidly identify the ones with the worse overall performance, who may be affecting the quality of the collected data, in order to take the pertaining actions in a timely fashion. Of course, the analysis of the Interviewer Risk Index should be accompanied by the assessment of the interviewer's performance in the specific DQIs.



Some selected DQIs are presented below.

*Percentage of individuals 15 years and over with proxy reporting, by interviewer, team and week.*

Proxy reporting for persons 15 years of age and above was only permitted if the person to be interviewed was not present at the household throughout the survey week because of travel reasons out of the city or town of residence. The overall prevalence of proxy reporting over the fourth quarter of 2017 is 6.2%, which means that 93.8% of the individuals responded by themselves and the data for the remaining 6.2% were provided by other household members. However, proxy reporting is usually quite differential by interviewer, since direct interviewing entails several visits from the interviewer to the same household on different days and time. This is why this was one of the indicators closely monitored from the beginning of fieldwork on an interviewer basis.

PERCENTAGE OF INDIVIDUALS 15 AND OVER WITH PROXY ANSWER, BY INTERVIEWER AND WEEK

Team	Interviewer	Week												Total
		1	2	3	4	5	6	7	8	9	10	11	12	
27	114 Cora	3.6	0.0											4.2
	120 Shaunnette	18.4	3.8	11.8	10.8	0.0	9.1	11.1	3.4	3.0	4.4	1.2	6.9	6.4
	134 Stacey	5.9	0.0	3.3	4.5	10.7	7.0	3.8	8.2	3.2	0.0	0.0	0.0	4.2
	124 Aleshia	0.0			5.0	3.8			0.0	3.4				2.0
29	128 Samantha	6.9	3.8	9.7	7.1	0.0	11.5	9.1	7.5	8.6	3.7	0.0	14.3	6.9
	131 Andrea	5.0	2.9	0.0	0.0	0.0	0.0	3.4	0.0	0.0	0.0	0.0	0.0	1.0
	136 Risandra	10.3	3.3	0.0	0.0	0.0	0.0	0.0	0.0	0.0	0.0	0.0	0.0	2.4
	145 Juliet				18.2	12.5		9.1	6.5	8.3	33.3	15.9	0.0	11.8
31	182 Aaliyah		5.6		0.0						33.3	1.4	3.4	3.3
	123 Soveme	11.8	5.9	8.8	4.5	0.0	9.4	10.0	15.6	11.8	11.4	5.1	4.3	8.4
	125 Tamila	6.5	10.8	8.6	0.0	0.0	0.0	3.8	0.0	4.0	0.0	4.0	0.0	3.4
	135 Tandika	5.3	5.9	5.6	9.1	0.0	0.0	0.0	6.9	4.2	5.4	6.5	11.1	4.9
21	152 Whitney	10.3	9.1	14.8	20.7	16.1	16.1	9.4	9.1	13.6	2.0	9.6	2.0	9.9
	157 Delaa	4.8	2.6	7.4	0.0	4.3	5.1	3.6	2.6	2.7	6.7	1.6	6.8	3.8
	158 Hazlyn	26.7	13.3	3.0	12.5	13.3	20.0	13.9	15.0	9.8	8.8	9.1	15.6	13.3
	154 Coretta	10.7	9.7	8.3	8.0	7.7	10.3	4.0	5.0	2.4	3.7	4.3	3.8	6.1
22	159 Ashley	13.6	9.1	3.7	4.2	13.2								9.0
	161 Joel	17.4	20.6	11.4	18.8	0.0	4.2							14.6
	144 Trishana	4.3	3.4	0.0	3.6	0.0	3.6	3.3	0.0	0.0	0.0	0.0		1.5
	146 Triston	0.0	0.0	0.0	4.5	0.0	0.0	0.0	4.0	10.3	5.6	11.4	4.8	4.1
30	148 Devendra	28.2	7.7	12.8	3.2	2.9	0.0	2.9	8.3	8.3	8.1	3.0	7.1	8.3
	102 Masika					6.5	15.4	21.3	45.5	31.3	20.0	25.0		21.0
	164 Antonio	11.1	17.9		5.9	0.0	26.2	0.0	0.0	11.1	7.1	0.0	0.0	11.0

PERCENTAGE OF INDIVIDUALS 15 AND OVER WITH PROXY ANSWER, BY TEAM AND WEEK

Team	Supervisor	Week												Total
		1	2	3	4	5	6	7	8	9	10	11	12	
27	Angela	10.0	1.2	7.8	9.2	3.4	7.9	6.7	6.4	3.2	2.9	0.9	3.4	5.3
29	Danielle	7.1	2.4	3.3	3.0	0.9	3.4	2.6	2.9	4.8	2.8	1.6	6.3	3.3
31	Ivor		5.6		8.5	12.5		9.1	6.5	11.1	3.8	9.5	0.0	8.2
28	John	8.3	7.6	7.6	4.5	0.0	3.6	4.4	7.9	7.2	5.8	5.3	4.3	5.6
21	Johnson	15.0	7.9	8.0	12.5	11.9	13.3	9.4	9.0	6.8	8.2	4.8	10.5	9.8
22	Leila	13.7	13.8	8.2	11.1	10.4	10.2	6.8	7.1	8.1	2.9	7.1	2.7	8.4
23	Lilowie	14.6	4.2	5.3	3.7	1.0	2.9	2.2	4.4	7.2	4.4	5.4	6.3	4.9
30	Michael	11.1	17.9			5.9	5.7	22.1	15.9	18.5	24.0	15.1	8.3	15.9
25	Michelle	5.6	6.3	8.1	9.0	8.0	1.8	3.1	7.0	9.9	1.4	9.1	10.5	6.7
24	Shareema	9.8	4.5	3.1	6.2	3.8	5.6	3.2	2.5	2.3	2.6	1.6	3.6	3.9
26	William	1.3	5.4	7.9	3.6	3.6	3.5	4.0	4.0	6.5	6.3	5.7	1.2	4.4
Total		9.4	6.2	6.6	6.9	4.8	7.6	5.3	5.8	7.1	4.8	5.0	5.4	6.2

[Back to Dashboard](#)

*Percentage of individuals 15 years and over with training, by interviewer, team and week.*

Some interviewers may undercount the number of persons who received vocational training in order to reduce their work burden, since every person who received such training should be asked a set of specific questions that should be skipped for those who did not receive it. In some surveys this behavior usually tends to intensify as fieldwork unfolds and, hence, the recorded number of persons with vocational training may decrease over time. The GLFS monitored this indicator to avoid such behavior, which would have a direct impact on the related estimates. The following two tables describe the evolution of the percentage of persons aged 15 years or more who received vocational training in the past 12 months, by interviewer and team.

PERCENTAGE OF TRAINEES 15 AND OVER, BY INTERVIEWER AND WEEK

Team	Interviewer	Week												Total
		1	2	3	4	5	6	7	8	9	10	11	12	
114	Cora	7.1	20.0											9.7
27	120 Shaunnette	13.2	0.0	8.8	1.5	10.2	6.1	2.8	20.7	3.0	2.9	7.4	0.0	6.2
134	Stacey	11.8	5.7	13.3	18.2	10.7	7.0	7.5	4.1	12.9	5.6	0.0	0.0	7.8
124	Aleshia	16.7		25.0	11.5			21.4	24.1			0.0		17.6
29	128 Samantha	0.0	3.8	0.0	3.6	3.8	15.4	9.1	2.5	22.9	14.8	10.3	0.0	7.2
131	Andrea	15.0	11.4	20.6	13.5	5.0	6.4	3.4	9.4	5.1	3.0	6.7	11.8	9.1
136	Risandra	3.4	10.0	4.2	0.0	0.0	0.0	3.1	6.1	3.3	3.2	4.3	0.0	3.3
31	145 Juliet				4.5	3.1			0.0	0.0	2.1	0.0	11.4	0.8
182	Aaliyah		0.0		4.0					0.0	4.1	5.1		3.9
123	Soverne	14.7	8.8	11.8	9.1	3.3	0.0	6.7	9.4	14.7	2.9	10.3	0.0	7.9
28	125 Tamila	0.0	10.8	14.3	6.1	17.9	0.0	3.8	0.0	0.0	3.1	0.0	0.0	5.1
135	Tandika	5.3	2.9	0.0	3.0	0.0	0.0	2.9	0.0	0.0	2.7	3.2	5.6	2.0
152	Whitney	3.4	6.1	3.7	0.0	6.5	0.0	3.8	2.3	4.5	0.0	5.8	8.2	3.9
21	157 Delisa	0.0	0.0	3.7	0.0	0.0	2.6	3.6	2.6	2.7	0.0	3.3	0.0	1.8
158	Hazlyn	6.7	0.0	6.1	0.0	3.3	0.0	0.0	2.5	5.9	2.9	2.3	0.0	2.6
154	Corettia	3.6	6.5	0.0	0.0	11.5	7.7	8.0	5.0	11.9	7.4	2.2	3.8	5.9
22	159 Ashley	4.5	4.5	0.0	0.0	5.3								3.0
161	Joel	8.7	0.0	2.9	3.1	0.0	0.0							2.6
144	Trishana	4.3	3.4	3.6	0.0	2.9	0.0	0.0	5.3	0.0	10.0	4.0		3.1
23	146 Triston	0.0	0.0	3.7	0.0	10.0	5.0	4.0	4.0	0.0	5.6	5.7	0.0	3.5
148	Devendra	2.6	2.6	0.0	6.5	0.0	4.5	5.7	4.2	0.0	5.4	3.0	4.8	3.3
102	Masika				8.5	3.8	2.1	9.1	3.1	8.9	12.5			5.5

PERCENTAGE OF TRAINEES 15 AND OVER, BY TEAM AND WEEK

Team	Supervisor	Week												Total
		1	2	3	4	5	6	7	8	9	10	11	12	
27	Angela	11.0	7.4	10.9	5.7	10.3	6.6	5.6	10.3	9.5	3.8	5.6	0.0	7.1
29	Danielle	7.1	11.0	8.8	11.1	4.5	8.0	9.6	9.4	10.6	6.5	10.2	5.0	8.5
31	Ivor		0.0		4.3	3.1		0.0	0.0	1.9	3.8	8.7	0.0	4.3
28	John	7.1	7.6	8.6	5.7	7.1	0.0	4.4	3.4	6.0	2.9	5.3	1.4	5.1
21	Johnson	3.8	2.0	4.6	0.0	3.6	1.0	1.6	2.6	4.5	2.0	2.9	0.0	2.4
22	Leila	5.5	3.4	1.0	1.2	7.5	3.4	5.8	3.6	6.1	3.8	4.1	6.7	4.4
23	Lilowie	2.4	2.1	2.1	2.5	4.0	2.9	3.3	4.4	0.0	7.1	4.3	3.2	3.3
30	Michael	5.6	0.0		0.0	5.7	1.5	1.6	3.7	2.0	5.5	4.2	0.0	2.9
25	Michelle	11.2	13.7	10.5	13.4	8.2	5.5	8.2	7.0	16.9	9.6	8.0	7.9	10.2
24	Shareema	0.0	2.2	5.2	2.1	1.9	6.7	3.2	3.4	3.0	5.2	1.6	1.8	3.0
26	William	0.0	2.7	4.0	3.6	4.5	8.2	5.1	5.0	4.3	6.3	5.7	4.8	4.7
Total		5.6	5.8	6.0	4.8	5.5	4.3	5.1	5.2	6.3	5.2	5.7	3.6	5.3

[Back to Dashboard](#)

*Average number of non-work income sources per household, by interviewer, team and week.*

AVERAGE NUMBER OF NON-WORK INCOME SOURCES PER HOUSEHOLD, BY INTERVIEWER AND WEEK

Team	Interviewer	Week												Total
		1	2	3	4	5	6	7	8	9	10	11	12	
114	Cora	0.8	1.8											1.2
27	120 Shaunnette	1.9	1.4	1.7	2.0	1.7	2.0	1.7	1.4	0.9	0.7	1.3	1.3	1.5
134	Stacey	1.6	2.1	1.5	1.8	1.5	1.6	1.2	1.1	0.9	1.3	0.8	0.8	1.3
124	Aleshia	1.3		2.4	1.5			1.6	3.6		2.2			2.0
29	128 Samantha	0.6	1.3	1.8	1.8	1.3	0.7	1.7	2.3	1.7	1.3	0.9	2.0	1.4
131	Andrea	1.9	2.6	3.0	3.3	2.5	4.7	2.6	3.5	2.5	2.0	1.5	2.4	2.7
136	Risandra	1.9	2.2	1.2	1.8	3.7	2.4	1.7	2.8	2.5	2.6	2.1	1.1	2.2
31	145 Juliet				1.0	1.2		0.4	0.7	1.0	0.5	1.2	3.0	1.0
182	Aaliyah		1.1		0.4					0.5	0.6	0.5		0.6
123	Soverne	1.5	0.5	1.5	1.3	0.3	2.0	0.9	0.5	1.9	1.4	1.6	1.2	1.2
28	125 Tamila	0.8	1.4	2.4	0.3	0.8	0.3	0.7	0.3	0.9	0.8	0.6	0.5	0.8
135	Tandika	1.0	1.3	0.6	0.9	1.1	0.5	0.5	0.9	1.5	0.8	0.5	0.5	0.8
152	Whitney	0.8	1.1	0.9	0.8	1.2	1.2	1.7	1.3	0.8	0.6	1.3	0.6	1.0
21	157 Delisa	0.9	1.6	1.6	1.4	1.0	1.5	0.8	0.9	1.1	1.0	1.2	0.8	1.1
158	Hazlyn	1.1	1.5	1.8	0.8	0.8	0.7	1.0	1.2	0.6	0.9	1.0	0.8	1.0
154	Corettia	1.5	1.8	1.9	1.4	2.2	2.3	2.0	1.1	1.5	2.4	1.4	1.7	1.8
22	159 Ashley	1.0	2.3	1.3	1.5	1.8								1.6
161	Joel	2.6	0.3	1.4	1.0	2.0	1.1							1.3
144	Trishana	0.8	0.7	1.3	0.9	1.2	1.1	0.6	0.4	0.0	0.5	0.6		0.7
23	146 Triston	1.0	1.5	1.2	0.6	0.8	0.7	1.8	1.1	0.7	1.5	1.4	1.1	1.1
148	Devendra	0.8	1.4	1.8	0.7	1.4	1.2	0.4	2.1	1.5	1.5	0.7	1.4	1.2
102	Masika					1.5	1.9	0.8	0.4	0.9	1.2	0.0		1.1

AVERAGE NUMBER OF NON-WORK INCOME SOURCES PER HOUSEHOLD, BY TEAM AND WEEK

Team	Supervisor	Week												Total
		1	2	3	4	5	6	7	8	9	10	11	12	
27	Angela	1.5	1.7	1.6	1.9	1.7	1.8	1.4	1.2	0.9	0.9	1.2	1.0	1.4
29	Danielle	1.4	1.9	2.0	2.4	2.3	2.7	1.9	2.9	2.2	1.9	1.6	1.7	2.1
31	Ivor		1.1		0.7	1.2		0.4	0.7	0.9	0.6	0.7	3.6	0.8
28	John	1.1	1.1	1.5	0.8	0.7	0.8	0.7	0.5	1.4	0.9	0.9	0.8	1.0
21	Johnson	0.9	1.4	1.4	0.8	1.0	1.2	0.9	1.1	0.8	0.9	1.1	0.8	1.0
22	Leila	1.7	1.4	1.5	1.3	2.0	1.8	1.8	1.2	1.1	1.5	1.4	1.0	1.5
23	Lilowie	0.9	1.2	1.4	0.7	1.1	1.0	1.0	1.2	0.8	1.1	0.9	1.3	1.0
30	Michael	0.6	0.3		0.9	1.4	1.0	0.5	0.5	0.8	1.0	0.1	0.0	0.7
25	Michelle	2.5	3.4	2.3	2.0	2.1	1.9	2.4	1.2	2.2	1.5	1.9	2.5	2.2
24	Shareema	1.2	1.3	1.0	0.8	0.7	0.7	1.1	0.8	0.6	0.7	1.0	0.7	0.9
26	William	0.5	1.2	1.2	1.2	0.4	0.8	0.7	0.8	0.8	0.7	0.8	1.1	0.8
Total		1.3	1.6	1.5	1.3	1.3	1.4	1.3	1.2	1.2	1.1	1.1	1.2	1.3

[Back to Dashboard](#)

*Percentage of employees with missing EXACT net income, by interviewer, team and week.*

With regards to income questions, when the respondent does not want to answer or claims he/she does not remember the exact amount, a good interviewer should re-ask the question and explain how important it is for the survey or ask for the best estimate. Since some interviewers may fail to proceed



this way, item nonresponse may be quite differential by interviewer and should be monitored. As a result of this monitoring, in the fourth quarter of 2017 the GLFS was able to obtain an EXACT wage amount for 89.0% of the interviewed employees. As regards the remaining 11.0%, about half of these respondents indicated an income range.

PERCENTAGE OF EMPLOYEES WITH MISSING EXACT NET INCOME, BY INTERVIEWER AND WEEK

Team	Interviewer	Week												Total
27	114 Cora	0.0	12.5											4.5
	120 Shaunnette	8.3	0.0	10.0	11.1	5.0	11.1	0.0	0.0	0.0	0.0	6.7	11.1	5.1
	134 Stacey	0.0	0.0	7.1	18.2	9.1	15.4	14.3	23.1	31.3	0.0	35.7	9.1	14.2
	124 Aleshia	0.0		25.0	0.0		10.0	8.3						7.5
29	128 Samantha	9.1	12.5	31.3	20.0	18.2	22.2	62.5	26.7	31.3	25.0	25.0	10.0	24.6
	131 Andrea	21.1	31.6	33.3	12.0	0.0	27.8	25.0	18.2	8.3	18.2	20.0	50.0	22.0
	136 Risandra	0.0	12.5	7.7	16.7	0.0	0.0	0.0	0.0	0.0	10.0	0.0	0.0	3.7
31	145 Juliet			0.0	0.0			0.0	0.0	0.0	0.0	0.0		0.0
	182 Aaliyah	50.0		0.0							0.0	0.0		4.0
	123 Sovereign	14.3	6.3	9.1	12.5	9.1	23.1	8.3	29.4	14.3	20.0	7.1	7.7	13.7
28	125 Tamila	10.0	6.7	7.7	0.0	7.1	10.0	0.0	7.7	0.0	0.0	0.0	0.0	4.5
	135 Tandika	0.0	10.0	8.3	28.6	20.0	0.0	13.3	10.0	50.0	11.1	0.0	0.0	10.6
	152 Whitney	0.0	10.0	0.0	14.3	0.0	20.0	20.0	14.3	0.0	10.0	23.1	0.0	8.6
21	157 Delisa	0.0	0.0	0.0	0.0	50.0	0.0	20.0	14.3	0.0	0.0	5.9	0.0	5.3
	158 Hazlyn	16.7	0.0	5.9	0.0	7.1	12.5	21.1	0.0	5.0	10.0	12.5	11.1	8.5
	154 Corellia	0.0	9.1	0.0	0.0	14.3	0.0	0.0	0.0	0.0	0.0	0.0	0.0	1.4
22	159 Ashley	12.5	14.3	0.0	0.0	7.7								7.0
	161 Joel	0.0	23.1	0.0	0.0		0.0							8.3
	144 Trishana	0.0	0.0	54.5	40.0	33.3	25.0	44.4	0.0	0.0	20.0	50.0		27.8
23	146 Triston	0.0	50.0	60.0	0.0	57.1	66.7	33.3	28.6	42.9	70.0	62.5	50.0	51.5
	148 Devendra	0.0	18.2	23.1	8.3	11.1	8.3	8.3	28.6	27.3	0.0	16.7	13.0	
	102 Masika						33.3	25.0	0.0	12.5	0.0	0.0		12.1
30	164 Antonio	0.0	0.0		0.0		6.7			0.0	0.0	0.0	0.0	2.4

PERCENTAGE OF EMPLOYEES WITH MISSING EXACT NET INCOME, BY TEAM AND WEEK

Team	Supervisor	Week												Total
27	Angela	2.9	4.3	8.3	13.8	6.5	13.6	6.9	12.0	18.5	0.0	15.9	10.0	9.2
29	Danielle	11.6	16.7	25.0	16.3	5.6	21.2	21.7	14.0	16.2	17.1	17.0	20.8	16.6
31	Ivor	50.0		0.0	0.0		0.0	0.0	0.0	0.0	0.0	0.0		1.4
28	John	9.4	7.3	8.3	11.1	10.0	13.3	7.5	17.5	13.6	10.0	3.7	4.2	9.8
21	Johnson	6.7	3.8	3.1	4.0	6.9	10.0	20.8	7.4	3.6	6.3	9.1	4.5	7.2
22	Leila	4.3	16.1	0.0	0.0	10.0	0.0	8.0	6.5	0.0	5.9	11.1	0.0	5.3
23	Lionelle	11.1	19.0	41.4	15.8	31.8	21.1	25.9	13.6	33.3	36.1	46.2	22.7	28.3
30	Michael	0.0	0.0		0.0	0.0	14.3	25.0	0.0	10.0	0.0	0.0	0.0	8.3
25	Michelle	16.1	6.7	15.2	11.8	15.0	4.8	0.0	18.8	18.5	9.4	3.3	12.5	11.4
24	Shareema	0.0	6.7	0.0	4.2	0.0	0.0	4.5	0.0	14.3	7.1	4.3	0.0	3.4
26	William	5.6	20.8	3.7	22.7	10.0	22.2	6.5	14.7	10.0	0.0	12.5	11.5	11.9
Total		7.8	11.2	13.0	10.9	8.7	12.4	13.1	11.8	12.5	10.2	11.1	9.7	11.0

[Back to Dashboard](#)

### 3. Direct fieldwork supervision through check-up visits

On-site fieldwork supervision via check-up interviews is an essential duty of the supervisors. It consists in verifying that the interviewers have applied the different questions to the adequate respondents and that they have recorded the answers properly. This is achieved by having the supervisors re-visit a subsample of the interviewed households and re-ask some key questions from the questionnaire.

Check-up visits are conducted within the seven days following the interview and the households to be re-visited are randomly selected, with a focus on specific interviewers based on the results obtained from the central monitoring of data quality indicators. Thus, this procedure helps maintain high standards among the interviewers and flag any unsatisfactory interviewers. During the check-up visit the supervisor enters the respondent's answers using a Supervision CAPI application developed for this purpose and then uploads the data to the survey server. Later on, the managing team cross-checks these data versus the data previously registered by the interviewer for the same respondents and reports any mismatch.

### 4. Auditing of randomized voice recordings and double data entry

Randomized voice recording consists in assigning a probability of being recorded to every question in the questionnaire. These probabilities vary according to the importance of the questions and may be 100% for the key ones. As a result, every question in the questionnaire has a chance to be audio recorded in every interview and the questions recorded vary among the different interviews, so the interviewer never knows which questions are being actually recorded in a particular interview.

The voice recordings are uploaded to the survey server along with the alphanumeric data registered by the interviewer in each interview. This is done on a continuous basis and no more than seven days after each interview. Two auditors then audit and evaluate every voice recording by means of a software developed for this purpose. They grade a set of qualitative items and enter the respondent's

answer that is heard in the recording. The software then cross-checks these data against the data previously registered by the interviewer during the interview and reports any mismatch.

It is important to highlight that the implementation of the CSQA framework requires constant analysis of the collected data and implies permanent and very active management. On the grounds of the CSQA approach the survey managing team can assess which actions to take in a timely fashion to preserve the quality of the collected data.

The annexes that follow present a guide to the computation of estimates and sampling errors with Stata, a codebook with the organization of the GLFS database and the GLFS Household and Individual questionnaires.

## Annex 1

### Stata syntax for weighted estimates and sampling error estimation

This annex provides a set of examples of the Stata syntax for computing estimates and the corresponding sampling errors, which account for the GLFS complex sample features (stratification, clustering and weighting due to unequal inclusion probabilities and nonresponse adjustments). For more details, data users are referred to the online Stata manual for the svy command (<http://www.stata.com/manuals14/svy.pdf>).

**To specify the GLFS sample design features** in any of the datasets, use the command:

```
svyset psu [pweight=weight], strata (stratum)
```

**To estimate the overall mean age of household members** in dataset GLFS\_174\_ind, use the command:

```
svy: mean q1_04
```

**To estimate the overall mean age by gender**, use the command:

```
svy: mean q1_04, over(q1_03)
```

**To estimate the mean age of household heads**, use the command:

```
svy, subpop (if q1_02==1): mean q1_04
```

**To estimate the frequency distribution of ethnic group**, use the command:

```
svy: tab q1_06, se ci cv
```

**To estimate the frequency distribution of ethnic group by gender**, use the command:

```
svy: tab q1_06 q1_03, col se ci cv
```

**To estimate the frequency distribution of ethnic group of household heads**, use the command:

```
svy, subpop (if q1_02==1): tab q1_06, se ci cv
```

**To estimate the regression coefficients** of a continuous variable  $y$  on two continuous variables  $x_1$  and  $x_2$ , use the command:

```
svy: regress y x1 x2
```

**To estimate the regression coefficients** of a continuous variable  $y$  on two continuous variables  $x_1$  and  $x_2$  and two categorical variables  $x_3$  and  $x_4$ , use the command:

```
xi: svy: regress y x1 x2 i.x3 i.x4
```

**To estimate the Gini coefficient of variable  $y$** , install the svylorenz Stata command and use the syntax:

```
svylorenz y, ngp(5)
```

***Stata syntax that should be used to test the change of an indicator between quarters 3 and 4 2017, accounting for the sample design features and the sample overlapping***

\*Stack both quarterly datasets into one dataset

use GLFS\_174\_ind\_public, clear

set more off

append using GLFS\_173\_ind\_public, force

\*\*\*Change between Q173 and Q174 in the employment to population ratio

gen lfstat2=0

replace lfstat2=1 if q1\_04>=15 & q3\_01!=.

replace lfstat2=. if q1\_04<15

svyset psu [pweight=weight], strata (stratum) vce(linearized) singleunit(missing)

svy, subpop(if q1\_04>=15 & (lfstat2==1 | lfstat2==0)): mean lfstat2, over (quarter)

lincom [lfstat2]174-[lfstat2]173

\*\*\*Change between Q173 and Q174 in the unemployment rate

gen lfstat=2

replace lfstat=0 if q1\_04>=15 & q3\_01!=.

replace lfstat=1 if q1\_04>=15 & lfstat!=0 & (q2\_14==1 & (q2\_19==1 | q2\_19==2) | q2\_17==1)

replace lfstat=. if q1\_04<15

svyset psu [pweight=weight], strata (stratum) vce(linearized) singleunit(missing)

svy, subpop(if q1\_04>=15 & (lfstat==0 | lfstat==1)): mean lfstat, over (quarter)

lincom [lfstat]174-[lfstat]173

\*\*\*Change in the average hours usually worked per week in the main job

svy, subpop(if q1\_04>=15 & lfstat2==1): mean q3\_03, over (quarter)

lincom [q3\_03]174-[q3\_03]173

## Annex 2

### GLFS codebook

This annex presents the contents of the two GLFS datasets. The first – and by far the most important – contains the answers to the questions in the individual questionnaire. The second reports the information provided about former household members living abroad.

As explained above, some of the variables included in the codebook have been dropped from the public version of the datasets to preserve confidentiality.

#### *Individuals dataset*

Individual questionnaire		
Name	Question	Values
hhid	Household ID	String with four substrings: [Region; Cluster; Household Listing Number; Check digit]
member	Member ID	Number
panelid	Individual panel ID	Number
weight	Weight	Number
stratum	Stratum	String with two substrings: [Region; Cluster]
psu	Primary Sampling Unit	String with two substrings: [Region; Cluster]
block	Rotation block	Number
domain	Estimation domain	Numbers: 1 to 3
quarter	Quarter	Number - 3 digits
		[1-2: Year; 3: Quarter (1 to 4)]
week	Fieldwork week	Numbers: 1 to 12
region	Region	String - Two numeric characters
ind		String with six substrings: [Region; Cluster; Household Listing Number; Check digit; Household Number; Member Number]
q1_00iq	Member number	Numbers
matchkey2	PARENT_KEY	
memberkey	KEY	
q1_00roster	Q1_00	
area	Coast/Interior	
zone	Urban/Rural	
psu_centroid_lat	(mean) geolat_hq	
psu_centroid_long	(mean) geolong_hq	
result_iq	Final result	
interv	Interviewer ID	
interv_firstname	Interviewer first name	
interv_lastname	Interviewer last name	
team	Team	
tleader	Team leader	
address_list	Address in listing	
q1_01b	Member's last name	
q1_01c	Member's first name	
head_fullname_hq	HH head's name in HQ	
headname_list	HH head's name in listing	
simheadname		Generated by the CAPI application
q1_01	1.01. First name	String

Individual questionnaire		
Name	Question	Values
q1_02	1.02. What is your relation to the head of the household?	[1: Head; 2: Spouse/ partner; 3: Son/daughter; 4: Step/ adopted child; 5: Grand/great-grand child; 6: Son/daughter-in-law; 7: Parent/parent-in-law; 8: Brother/sister; 9: Other relative; 10: Non relative]
q1_03	1.03. Sex	[1: Male; 2: Female]
q1_04	1.04. Age	Numbers
date_birth	1.04b. Date of birth	Generated by the CAPI application
submissiondate	SubmissionDate	
starttime		Generated by the CAPI application
endtime		Generated by the CAPI application
deviceid		Generated by the CAPI application
subscriberid		Generated by the CAPI application
simid		Generated by the CAPI application
devicephonenumber		Generated by the CAPI application
username		Generated by the CAPI application
date		Generated by the CAPI application
pass	Your password:	String
searchhhid	The household ID:	String
enum_ok		Generated by the CAPI application
address	Tick the circle if the ADDRESS and HOUSEHOLD HEAD match the ones in your TRACKING FORM, if not, return and check your answer:	[HH_key: addressname]
duration_iq		Generated by the CAPI application
caseid		Generated by the CAPI application
timestarted	timestarted	Generated by the CAPI application
result_other_specify	Other reason, specify:	String
q1_05	1.05. What is your marital / union status?	[1: Not Married/ Never lived together; 2: Living together; 3: Married; 4: Separated; 5: Divorced; 6: Widowed]
q1_06	1.06. To what ethnic group do you belong?	[1: African/ Black; 2: Mixed; 3: East Indian; 4: Amerindian; 5: Chinese; 6: Portuguese; 7: White; 8: Other]
q1_07	1.07. In which country were you born?	[1: Guyana; 2: Other Caribbean country; 3: South/Central America/Mexico; 4: U.S.A.; 5: Canada; 6: Great Britain; 7: Other European country; 8: Asia; 9: Africa; 10: Other]
q1_08	1.08. How many years have you been residing in Guyana on a continuous basis?	Numbers
q1_09	1.09. In which region was your mother living when you were born?	[1: Region 1; 2: Region 2; 3: Region 3; 4: Region 4; 5: Region 5; 6: Region 6; 7: Region 7; 8: Region 8; 9: Region 9; 10: Region 10; 11: Do not know]
q1_10	1.10. Where were you living five years ago?	[1: In this city/village; 2: In another city/village of this Guyana region; 3: In another Guyana region; 4: In another country]
q1_11	1.11. Have you EVER attended school?	[1: Yes; 2: No]
q1_12	1.12. Are you now enrolled in a school or in an educational institution?	[1: Yes; 2: No]
q1_13	1.13. What is the highest level of education that you have ATTENDED?	[1: Pre-primary; 2: Primary; 3: Secondary; 4: Post-secondary; 5: University / Tertiary]
q1_14	1.14. What class did you COMPLETE?	[1: None; 2: Prep A & B/ Grds 1 & 2; 3: Std 1/Grd 3; 4: Std 2/Grd 4; 5: Std 3/Grd 5; 6: Std 4/Grd 6; 7: Std 4/Grd 6; 8: Frm 1/Grd 7; 9: Frm 2/Grd 8; 10: Frm 3/Grd 9; 11: Frm 4/Grd 10; 12: Frm 5/Grd 11; 13: Frm 6/Grd 12]
q1_15	1.15. What is the highest post-secondary level/degree that you have COMPLETED?	[1: None; 2: Technical/Vocational Certificate or Diploma; 3: University Certificate or Diploma; 4: Bachelor's degree; 5: Post graduate Certificate or Diploma; 6: Masters; 7: Doctoral]
q1_16	1.16. What is the highest examination that you have passed?	[1: None; 2: School leaving; 3: College of Preceptors (CP); 4: Junior Cambridge Cert; 5: CXC Basic; 6: GCE O' levels/CXC 1-2; 7: GCE O' levels/CXC 3-4; 8: GCE O' levels/CXC 5+; 9: High School/Senior Cambridge Certificate; 10: GCE A' levels/CAPE A: 1-2; 11: GCE A' levels/CAPE A: 3+]

Individual questionnaire		
Name	Question	Values
q2_01	2.01. In the LAST 12 MONTHS have you received training for any occupation (for example: on computers, cosmetology, hairdressing, mechanics, etc.)?	[1: Yes; 2: No]
q2_02	2.02. In what subject was your last training?	String
q2_03	2.03. Where did you acquire MOST of this training?	[1: Apprenticeship; 2: On the job; 3: Correspondence Course; 4: Virtual/Internet Learning; 5: On-site private institution; 6: On-site government; 7: Other]
q2_04	2.04. In the LAST 7 DAYS, did you do any work for a wage, salary or tips EVEN IF ONLY FOR ONE HOUR?	[1: Yes; 2: No]
q2_05	2.05. In the LAST 7 DAYS, did you run or do any kind of business or farming, alone or with others, to generate income EVEN IF ONLY FOR ONE HOUR?	[1: Yes; 2: No]
q2_06	2.06. In the LAST 7 DAYS did you do any of the following activities EVEN IF ONLY FOR ONE HOUR?	[1: 1. Cooking for sale or other food processing activities for sale; 2: 2. Making baskets, mats or other handicrafts for sale; 99: None of the above (INTERVIEWER: DO NOT READ)] (Multiple choices)
q2_07	2.07. In the LAST 7 DAYS, did you help unpaid in a business or farm owned by a household member, EVEN IF ONLY FOR ONE HOUR?	[1: Yes; 2: No]
q2_08	2.08. Was this work in agriculture, livestock rearing or fishing?	[1: Yes; 2: No]
q2_09	2.09. IN GENERAL, are the products obtained from this activity for sale/ barter or are they for family use?	[1: Only for sale/barter; 2: Mainly for sale/ barter; 3: Mainly for family use; 4: Only for family use]
q2_10	2.10. In the LAST 7 DAYS, were you absent from a paid job or a business, including a household business, to which you will return?	[1: Yes; 2: No]
q2_11	2.11. Why were you absent from your work in the LAST 7 DAYS?	[1: Shift work, flexi time; 2: Holiday/Vacation; 3: Sickness; 4: Maternity/paternity/annual leave; 5: Study or training; 6: Other personal reasons (care for family, civic duties, ...); 7: Problems with transport, equipment; 8: Bad weather; 9: Temporary reduction in clients, work break; 10: Strike or labor dispute; 11: Long-term disability; 12: Off season; 13: Waiting for new job; 14: Other reason]
q2_12	2.12. Including the time that you have been absent, will you return to that same work...?	[1: Within 3 months or less; 2: After 3 months; 3: Not sure to return]
q2_13	2.13. Do you continue receiving an income from your job during this absence?	[1: Yes; 2: No]
q2_14	2.14. During the LAST 30 DAYS, did you look for a job or tried to start a business?	[1: Yes; 2: No]
q2_15	2.15. What did you MAINLY do in the LAST 30 DAYS to find a job or to try to start a business?	[1: Applied/contacted organizations/employers; 2: Checked at work sites, markets, etc.; 3: Placed or answered job advertisements; 4: Sought assistance of friends or relatives; 5: Looked for land, building, machinery or equipment or raw materials; 6: Arranged for financial resources; 7: Applied for license or permit; 8: Registered with Labor Exchange Office; 9: Took a test or interview; 10: Social media (Facebook, internet, etc.); 11: Nothing (this confirms no job search); 99: Other]
q2_16	2.16. Even though you did not look for work in the LAST 30 DAYS, do you want to work for pay or profit?	[1: Yes; 2: No]
q2_17	2.17. What was the MAIN reason why you did not seek work or try to start a business during the LAST 30 DAYS?	[1: Found work but waiting to start; 2: Awaiting replies to earlier enquiries; 3: Awaiting for the season to start; 4: Attended school/training courses; 5: Family responsibilities or housework; 6: Illness, injury or disability; 7: Too young/old to find work; 8: Does not know where to look for work; 9: Lacks employers' requirements (skills, experience, qualifications); 10: No jobs available in the area; 99: Other reasons]
q2_18	2.18. How long have you been without work and trying to find a job or start a business?	[1: Less than 3 months; 2: 3 to 5 months; 3: 6 to 12 months; 4: 1 to 2 years; 5: 3 to 4 years; 6: 5 years or more; 7: Don't know]

Individual questionnaire		
Name	Question	Values
q2_19	2.19. If an opportunity to work for pay or to start a business became available, could you have started or start working?	[1: Yes, in the last 7 days; 2: Yes, within the next two weeks; 3: No]
q2_20	2.20. What is the MAIN reason why you do not want or you are not available to work?	[1: In school/ training; 2: Housework/ family responsibilities; 3: Illness, injury, disability; 4: Retired, too old for work; 5: Off-season; 6: Working conditions not acceptable; 7: Engaged in subsistence farming/fishing; 8: Other]
q3_01	3.01. In the LAST 7 DAYS did you have more than one job or economic activity?	[1: Yes; 2: No]
q3_02	3.02. What is the MAIN reason for you holding more than one job?	[1: Additional income needed; 2: Financial independence; 3: Hobby; 4: Did not get a full time job; 5: Other]
q3_03	3.03. How many hours do you USUALLY work PER WEEK in your MAIN JOB (the one that takes more hours)?	Numbers
q3_04	3.04. How many hours do you USUALLY work per week in your other jobs?	Numbers
q3_05	3.05. Total hours USUALLY worked per week	Numbers
q3_06	3.06. What is the MAIN reason why you USUALLY work less than 40 hours per week?	[1: Cannot find more work; 2: Lack of raw materials, finances, equipment etc; 3: Machinery, electrical, other breakdown; 4: Reduction in economic activity/slack period, off season; 5: Does not want more work, has sufficient work; 6: Full time work is less than 40 hrs/wk; 7: Personal / family responsibilities; 8: Student, unpaid training; 9: Own ill health, incapacity to work; 10: Climate/nature; 11: Other]
q3_07_1	Monday	Numbers
q3_07_2	Tuesday	Numbers
q3_07_3	Wednesday	Numbers
q3_07_4	Thursday	Numbers
q3_07_5	Friday	Numbers
q3_07_6	Saturday	Numbers
q3_07_7	Sunday	Numbers
q3_08	3.08. IN THE LAST 7 DAYS how many hours did you ACTUALLY work in your other jobs?	Numbers
q3_09		Generated by the CAPI application
q3_10		Generated by the CAPI application
q3_11	3.11. Would you want to work more hours for pay or profit than you USUALLY work?	[1: Yes; 2: No]
q3_12	3.12. If an opportunity for additional work became available, could you start working more hours within the next 30 days?	[1: Yes; 2: No]
q3_13	3.13. Have you ever TRIED to work more hours in this job or in another job?	[1: Yes; 2: No]
q3_14	3.14. When was the LAST TIME you tried to do this?	[1: In the past 30 days; 2: From 1 month to less than 3 months ago; 3: From 3 months to less than 6 months ago; 4: From 6 months to less than 12 months ago; 5: 12 months ago and over]
q3_15	3.15. What did you MAINLY do when you tried to work more hours?	[1: Register at public employment exchange; 2: Register at private employment exchange; 3: Direct application; 4: Checking at work sites, farms, factory gates, markets, etc; 5: Answering advertisements; 6: Seeking assistance of friends, relatives, colleagues, unions, etc; 7: Asked my boss to work more hours in my current job; 8: Looking for land, building, etc to establish, own business; 9: Arranging for financial resources, applying for permits, licenses to start your own business; 10: Tried to get new clients; 11: Other]
q3_15b	3.15b. Specify:	String
q3_16	3.16. What is your employment status in your MAIN JOB?	[1: Employee (for another person, for a company or for the government); 2: Unpaid family worker; 3: Self-employed (without paid help); 4: Self-employed (with paid help)]
q3_17	3.17. Are you a farmer?	[1: Yes; 2: No]
q3_18	3.18. Are you working on the basis of a written contract or is it on the basis of a verbal agreement?	[1: A written contract; 2: A verbal agreement]



Individual questionnaire		
Name	Question	Values
q3_19	3.19. Is your contract or agreement of a limited time duration or is it permanent without time limit?	[1: Limited time; 2: Permanent without time limit]
q3_20	3.20. What is the duration of your contract or agreement?	[1: Daily; 2: 2 days or more but less than 1 month; 3: 1 month or more but less than 3 months; 4: 3 months or more but less than 6 months; 5: 6 months or more but less than 12 months; 6: 12 months or more but less than 24 months; 7: 24 months or more]
q3_21	3.21. How long have you been employed by your current employer based on a fixed term contract or agreement?	[1: Less than 6 months; 2: 6 months or more but less than 1 year; 3: 1 year or more but less than 2 years; 4: 2 years or more but less than 3 years; 5: 3 years or more]
q3_22	3.22. Do you benefit from paid annual leave?	[1: Yes; 2: No]
q3_23	3.23. Do you benefit from compensation for unused leave?	[1: Yes; 2: No; 3: Don't know]
q3_24	3.24. Do you benefit from paid sick leave in case of illness?	[1: Yes; 2: No]
q3_25	3.25. If you had a baby, would you benefit from maternity/paternity leave?	[1: Yes; 2: Possibly; 3: No]
q3_26	3.26. Does your employer deduct contributions for the NIS (National Insurance Scheme)?	[1: Yes; 2: No]
q3_27	3.27. Are you a member of any union or professional association or employers association?	[1: Yes; 2: No]
q3_28	3.28. What kind of accounts or records does your enterprise keep?	[1: Complete set of written accounts for tax purposes; 2: Simplified written accounts not for tax purposes; 3: Only through informal records of orders, sales, purchases; 4: No records are kept]
q3_29	3.29. Are you contributing BY YOURSELF to any social security scheme, such as (...)?	[1: NIS (National Insurance); 2: Private insurance for pension or health; 3: None of the above (INTERVIEWER: DO NOT READ)] (Multiple choices)
q3_30	3.30. What is the name of the company, shop or place where you work?	String
q3_31	3.31. What are the MAIN products or services produced at your workplace?	String
searchtype	Search type:	[contains: Contains; matches: Matches; startswith: Starts with; endswith: Ends with]
searchtext	3.29.	String
isic_code	3.29. Choose the Industry:	[ISIC_Code: ISIC]
q3_32	3.32. What is your job?	String
q3_33	3.33. What are your most important activities or duties?	String
searchtype_2	Search type:	[contains: Contains; matches: Matches; startswith: Starts with; endswith: Ends with]
searchtext_2	3.32.	String
isco_code	3.32. Choose the Occupation:	[ISCO_Code: ISCO]
q3_34	3.34. What is the type of ownership of your business/place where you are employed?	[1: Business owned by individual, family or partners; 2: Corporate business/company (un-limited); 3: Government (Central or Local); 4: State enterprise/public body; 5: Other non-governmental private organization]
q3_35	3.35. Is your business or the enterprise in which you work registered in any national, state or professional agency, or is in the process of being registered?	[1: Yes, registered; 2: In Process; 3: No; 4: Don't know]
q3_36	3.36. Where is your business or the enterprise in which you work registered, or in the process of being registered?	[1: GRA (Guyana Revenue Authority); 2: NIS (National Insurance Scheme); 3: Registered at the Registrar (High Court); 4: Business Certificate of the Ministry of Commerce; 5: Do not know (INTERVIEWER: DO NOT READ); 6: None of the above (INTERVIEWER: DO NOT READ)] (Multiple choices)

Individual questionnaire		
Name	Question	Values
q3_37	3.37. Where is your business or the enterprise in which you work located?	[1: In a fixed factory, office; 2: In a fixed shop, store; 3: In a market place licensed stall (where goods are removed each day); 4: In your home or the business owner's home, without separate workspace; 5: In your home or the business owner's home, but a separate workspace (whether inside or attached to the home); 6: On the side walk of the street or public space (not an official market); 7: On an empty, private lot; 8: As a moving vendor; 9: In a taxi/bus; 10: In a farm or agricultural plot; 11: In a construction site; 12: Other]
q3_38	3.38. How many persons (including yourself) USUALLY work in the establishment or business where you operate?	[1: 1 person; 2: 2 to 4 persons; 3: 5 to 9 persons; 4: 10 to 19 persons; 5: 20 to 49 persons; 6: 50 or more persons]
q3_39	3.39. How many of these persons are family members of the business owner?	[1: 1 person; 2: 2 to 4 persons; 3: 5 to 9 persons; 4: 10 to 49 persons; 5: 50 or more persons; 6: None; 7: Don't know]
q3_40	3.40. How long ago did you start working in this enterprise / business / for this employer?	[1: Less than 6 months; 2: 6 months or more but less than 1 year; 3: 1 year or more but less than 5 years; 4: 5 years or more but less than 10 years; 5: 10 years or more]
q3_41	3.41. What is your MAIN source of financial support?	[1: Yourself; 2: Spouse/Partner; 3: Parents; 4: Son/daughter; 5: Other relatives/friends in Guyana; 6: Remittances from abroad; 7: Savings/Investment; 8: Pension; 9: Unemployment benefit; 10: Social assistance; 11: Others]
q4_01	4.01. How long ago have you been without work and seeking for work?	[1: Less than 1 month; 2: 1 month and less than 3 months; 3: 3 months and less than 6 months; 4: 6 months and less than 12 months; 5: 12 months or more]
q4_02	4.02. Have you ever worked or had a job?	[1: Yes; 2: No]
q4_03	4.03. What is the MAIN reason why you stopped working?	[1: Individual dismissal; 2: Job completed; 3: Insufficient payment; 4: Resigned to study; 5: Resigned to take care of children; 6: Enterprise proceeded to mass dismissals; 7: Business failed; 8: Moved to a new area; 9: Other]
q4_04	4.04. How many hours per week did you USUALLY work in your last job?	Numbers
q4_05	4.05. What was your employment status in your LAST JOB?	[1: Government employee; 2: Private employee (work for another person or company); 3: Unpaid family worker; 4: Self-employed (without paid help); 5: Self-employed (with paid help)]
q4_06	4.06. Were you a farmer in your LAST JOB?	[1: Yes; 2: No]
q4_07	4.07. What type of worker were you in your last job?	[1: Paid Permanent; 2: Paid Temporary; 3: Paid Casual; 4: Home Worker/Sub Contractor; 5: Paid apprentice/intern; 6: Other Unpaid Worker]
q4_08	4.08. In what country was this last job?	[1: Guyana; 2: Other Caribbean country; 3: South/Central America/Mexico; 4: U.S.A.; 5: Canada; 6: Great Britain; 7: Other European country; 8: Asia; 9: Africa; 10: Other]
q4_09	4.09. What is your MAIN source of financial support?	[1: Yourself; 2: Spouse/Partner; 3: Parents; 4: Son/Daughter; 5: Pension; 6: Savings; 7: Social assistance; 8: Friends/Other relatives in Guyana; 9: Friends/Other relatives abroad; 10: Others]
q5_01	5.01. To which of the following groups do you belong?	[1: Student; 2: Housewife; 3: Retired/ Old age; 4: Unable to work; 6: Other]
q5_02	5.02. Have you ever worked, either for others or in your own business?	[1: Yes; 2: No]
q5_03a	Years	Numbers
q5_03b	Months	Numbers
q5_04	5.04. What was your employment status in your last job?	[1: Government employee; 2: Private employee (work for another person or company); 3: Unpaid family worker; 4: Self-employed (without paid help); 5: Self-employed (with paid help)]
q5_05	5.05. Were you a farmer in your LAST JOB?	[1: Yes; 2: No]
q5_06	5.06. In what country was this last job?	[1: Guyana; 2: Other Caribbean country; 3: South/Central America/Mexico; 4: U.S.A.; 5: Canada; 6: Great Britain; 7: Other European country; 8: Asia; 9: Africa; 10: Other]

Individual questionnaire		
Name	Question	Values
q5_07	5.07. What was your MAIN source of financial support during the LAST 7 DAYS?	[1: Yourself; 2: Spouse/Partner; 3: Parents; 4: Son/Daughter; 5: Pension; 6: Savings; 7: Social assistance; 8: Friends/Other relatives in Guyana; 9: Friends/Other relatives abroad; 10: Others]
q6_01	6.01. Still talking about your MAIN JOB. What was your income IN THE LAST MONTH IN TERMS OF NET salary?	Numbers
q6_01b	6.01b. And from the following options, what was your income IN THE LAST MONTH IN TERMS OF NET salary?	[0: A) Zero (0); 1: B) \$1 – \$8,000; 2: C) \$8,001 – \$13,000; 3: D) \$13,001 – \$20,000; 4: E) \$20,001 – \$50,000; 5: F) \$50,001 – \$100,000; 6: G) \$100,001 – \$150,000; 7: H) \$150,001 – \$200,000; 8: I) \$200,001 – \$300,000; 9: J) \$300,001 – \$400,000; 10: K) \$400,001 – \$500,000; 11: L) \$500,001 – \$1,000,000; 12: M) \$1,000,001 or more; 99: N) Does not know; 98: O) Does not want to answer]
q6_02a	a. Commissions, benefits, provisions	[1: Yes; 2: No]
q6_02b	b. Overtime pay (NET)	[1: Yes; 2: No]
q6_02c	c. Travel/other allowances	[1: Yes; 2: No]
q6_02d	d. Bonus	[1: Yes; 2: No]
q6_02e	e. Special holiday pay	[1: Yes; 2: No]
q6_02f	f. Job related Government transfers (accident, illness, maternity)	[1: Yes; 2: No]
q6_03a	a. Food and drinks	[1: Yes; 2: No]
q6_03b	b. Housing and related services	[1: Yes; 2: No]
q6_03c	c. Health care (including for your family members)	[1: Yes; 2: No]
q6_03d	d. Transportation (vehicle, gas, tolls)	[1: Yes; 2: No]
q6_03e	e. Clothes	[1: Yes; 2: No]
q6_03f	f. Nurseries or child care	[1: Yes; 2: No]
q6_03g	g. Education for children	[1: Yes; 2: No]
q6_03h	h. Products or services of the enterprise you work for	[1: Yes; 2: No]
q6_03i	i. Any other type of in-kind pay	[1: Yes; 2: No]
q6_04a	a. Commissions, benefits, provisions	Numbers
q6_04b	b. Overtime pay (NET)	Numbers
q6_04c	c. Travel/other allowances	Numbers
q6_04d	d. Bonus	Numbers
q6_04e	e. Special holiday pay	Numbers
q6_04f	f. Job related Government transfers (accident, illness, maternity)	Numbers
q6_05a	a. Food and drinks	Numbers
q6_05b	b. Housing and related services	Numbers
q6_05c	c. Health care (including for your family members)	Numbers
q6_05d	d. Transportation (vehicle, gas, tolls)	Numbers
q6_05e	e. Clothes	Numbers
q6_05f	f. Nurseries or child care	Numbers
q6_05g	g. Education for children	Numbers
q6_05h	h. Products or services of the enterprise you work for	Numbers
q6_05i	i. Any other type of in-kind pay	Numbers
q6_06	6.06b. If your business is making a profit, what cash amount did you withdraw from it during THE LAST MONTH?	Numbers
q6_06b	6.06b. If your business is making a profit, what cash amount did you withdraw from it during THE LAST MONTH?	[0: A) Zero (0); 1: B) \$1 – \$8,000; 2: C) \$8,001 – \$13,000; 3: D) \$13,001 – \$20,000; 4: E) \$20,001 – \$50,000; 5: F) \$50,001 – \$100,000; 6: G) \$100,001 – \$150,000; 7: H) \$150,001 – \$200,000; 8: I) \$200,001 – \$300,000; 9: J) \$300,001 – \$400,000; 10: K) \$400,001 – \$500,000; 11: L) \$500,001 – \$1,000,000; 12: M) \$1,000,001 or more; 99: N) Does not know; 98: O) Does not want to answer]
q6_07	6.07. IN THE LAST MONTH, If you used products or services of your business to consume at home, what is the commercial value of such products and services?	Numbers
q6_08	6.08. In THE LAST MONTH, did you eat at home any foods from your own production?	[1: Yes; 2: No]

Individual questionnaire		
Name	Question	Values
q6_09	6.09. If you had to pay for these products, what would be their value?	Numbers
q6_10	6.10. In the last month, how much did you get from your OTHER JOBS?	Numbers
q6_11	NIS pension?	Numbers
q6_12	old age pension?	Numbers
q6_13	service pension?	Numbers
q6_11b	NIS pension?	[0: A) Zero (0); 1: B) \$1 – \$8,000; 2: C) \$8,001 – \$13,000; 3: D) \$13,001 – \$20,000; 4: E) \$20,001 – \$50,000; 5: F) \$50,001 – \$100,000; 6: G) \$100,001 – \$150,000; 7: H) \$150,001 – \$200,000; 8: I) \$200,001 – \$300,000; 9: J) \$300,001 – \$400,000; 10: K) \$400,001 – \$500,000; 11: L) \$500,001 – \$1,000,000; 12: M) \$1,000,001 or more; 99: N) Does not know; 98: O) Does not want to answer]
q6_12b	old age pension?	[0: A) Zero (0); 1: B) \$1 – \$8,000; 2: C) \$8,001 – \$13,000; 3: D) \$13,001 – \$20,000; 4: E) \$20,001 – \$50,000; 5: F) \$50,001 – \$100,000; 6: G) \$100,001 – \$150,000; 7: H) \$150,001 – \$200,000; 8: I) \$200,001 – \$300,000; 9: J) \$300,001 – \$400,000; 10: K) \$400,001 – \$500,000; 11: L) \$500,001 – \$1,000,000; 12: M) \$1,000,001 or more; 99: N) Does not know; 98: O) Does not want to answer]
q6_13b	service pension?	[0: A) Zero (0); 1: B) \$1 – \$8,000; 2: C) \$8,001 – \$13,000; 3: D) \$13,001 – \$20,000; 4: E) \$20,001 – \$50,000; 5: F) \$50,001 – \$100,000; 6: G) \$100,001 – \$150,000; 7: H) \$150,001 – \$200,000; 8: I) \$200,001 – \$300,000; 9: J) \$300,001 – \$400,000; 10: K) \$400,001 – \$500,000; 11: L) \$500,001 – \$1,000,000; 12: M) \$1,000,001 or more; 99: N) Does not know; 98: O) Does not want to answer]
q6_14	6.14. In the LAST 1 MONTH did you receive money from survivors benefits?	Numbers
q6_15	6.15. In the LAST 1 MONTH did you receive money from public assistance? (i.e. welfare grants, disability grants, invalidity grants, unemployment, etc.)	Numbers
q6_16	a) Rent	Numbers
q6_17	b) Sale	Numbers
q6_18	d. any alimony, maintenance or child support?	Numbers
q6_19	e. money from friends or relatives out of this household living in Guyana?	Numbers
q6_20a	GYD (in the last 6 months)	Numbers
q6_20b	US Dollars (in the last 6 months)	Numbers
q6_21	6.21. In the PAST 12 MONTHS did you receive money from financial investments? (i.e. dividends, interest paid on bonds, other investments)	Numbers
q6_22	6.22. In the LAST 12 MONTHS did you receive any other income not mentioned before?	Numbers
q6_23	6.23. In the LAST 6 MONTHS did you receive any products from relatives/friends living abroad?	[1: Yes; 2: No]
q6_24a	GYD	Numbers
q6_24b	US Dollars	Numbers
telephone_number	Telephone number:	Numbers
q6_25	6.25. INTERVIEWER: Were the questions answered by the individual in question?	[1: Yes; 2: No]
q6_26a	Last name	String
q6_26b	First name	String
q6_27	Why he/she could not answer?	String
end	END OF INDIVIDUAL INTERVIEW	Generated by the CAPI application
obs	Observations	String
geolat_iq	Latitude_individual	
geolong_iq	Longitude_individual	

Individual questionnaire		
Name	Question	Values
geopointaltitude	Altitude_individual	
geoacc_iq	Geopoint_accuracy_individual	
timefinished	timefinished	Generated by the CAPI application
instanceid	instanceID	
instancename	instanceName	
formdef_version		Generated by the CAPI application
key	KEY	
sourcenwinc		Generated by the CAPI application
sourceaddinc		Generated by the CAPI application
sourceinkind		Generated by the CAPI application

**Emigrants dataset**

Emigrants questionnaire		
Name	Question	Values
hhid	Household ID	String with four substrings: [Region; Cluster; Household Listing Number; Check digit]
emig	Emigrant ID	
weight	Weight	Number
stratum	Stratum	String with two substrings: [Region; Cluster]
psu	Primary Sampling Unit	String with two substrings: [Region; Cluster]
block	Rotation block	Number
domain	Estimation domain	Numbers: 1 to 3
quarter	Quarter	Number - 3 digits
week	Fieldwork week	[1-2: Year; 3: Quarter (1 to 4)] Numbers: 1 to 12
region	Region	String - Two numeric characters
matchkey2	PARENT_KEY	
emigkey	KEY	
area	Coast/Interior	
zone	Urban/Rural	
psu_centroid_lat	(mean) geolat_hq	
psu_centroid_long	(mean) geolong_hq	
interv	Interviewer ID	
interv_firstname	Interviewer first name	
interv_lastname	Interviewer last name	
team	Team	
tleader	Team leader	
address_list	Address in listing	
q7_03a	Last name	String
q7_03b	First Name	String
q7_04	7.04. What is \${q7_03b}'s relation to the head of THIS household?	[2: Spouse/ partner; 3: Son/daughter; 4: Step/ adopted child; 5: Grand/great-grand child; 6: Son/daughter-in-law; 7: Parent/parent-in-law; 8: Other relative; 9: Non relative]
q7_05	7.05. \${q7_03b}'s Sex	[1: Male; 2: Female]
q7_06	7.06. \${q7_03b}'s Age	Numbers
q7_07	7.07. What is the highest level of education that \${Q7_03b} COMPLETED?	[1: None; 2: Primary; 3: Secondary; 4: Technical/Vocational Certificate or Diploma; 5: University / Certificate /Diploma; 6: Short Cycle Tertiary; 7: Bachelor's degree; 8: Post graduate Certificate or Diploma; 9: Masters; 10: Doctoral; 11: Don't know]
q7_08	7.08. What did \${q7_03b} study?	String
q7_09	7.09. In what year did \${q7_03b} move out of Guyana?	Numbers
q7_10	7.10. In what period did \${q7_03b} move out of Guyana?	[1: Before 1970; 2: 1970 - 1979; 3: 1980 - 1989; 4: 1990 - 1999; 5: 2000 - 2009; 6: 2010 or after]
q7_11	7.11. What was the MOST IMPORTANT reason for \${q7_03b} moving out of Guyana?	[1: More income; 2: Work; 3: Study; 4: Marriage; 5: Family Reunification; 6: Political reasons; 7: Crime situation; 8: Other; 9: Don't know]
q7_12	7.12. In what country is \${q7_03b} living now?	[1: Caribbean country; 2: South America; 3: U.S.A.; 4: Canada; 5: Great Britain; 6: Other European country; 7: Asia; 8: Africa; 9: Other]
q7_13	7.13. Had \${q7_03b} ever worked before leaving Guyana?	[1: Yes; 2: No]
q7_14	7.14. What was \${q7_03b}'s employment status in the LAST JOB SHE/HAD IN GUYANA?	[1: Employee (for another person, for a company or for the government); 2: Unpaid family workers; 3: Self-employed (without paid help); 4: Self-employed (with paid help); 5: Don't know]
q7_15	7.15. What kind of work did \${q7_03b} perform in his/her LAST JOB IN GUYANA (job title)?	String

Emigrants questionnaire		
Name	Question	Values
q7_16	7.16. What is \${q7_03b}'s current MAIN activity?	[1: Working; 2: Looking for work; 3: Keeping the house; 4: Studying; 5: Retired; 6: Incapacitated; 7: Other; 8: Don't know]
q7_17	7.17. Is \${q7_03b} currently working?	[1: Yes; 2: No; 3: Don't know]
setofrepeat_emigrants	SET-OF-Repeat_emigrants	
result_hq	Result	
headname_list	headname_list	
geoacc_hq	geopoint-Accuracy	
submissiondate	SubmissionDate	
starttime		Generated by the CAPI application
endtime		Generated by the CAPI application
deviceid		Generated by the CAPI application
subscriberid		Generated by the CAPI application
simid		Generated by the CAPI application
devicephonenumber		Generated by the CAPI application
username		Generated by the CAPI application
date		Generated by the CAPI application
pass	Your password:	String
searchhhid	The household ID:	String
enum_ok		Generated by the CAPI application
address	Tick the circle if the ADDRESS and HOUSEHOLD HEAD match the ones in your TRACKING FORM, if not, return and check your answer:	[HH_key: addressname]
geopointaltitude	geopoint-Altitude	
timestarted	timestarted	Generated by the CAPI application
q7_01	7.01. Are there any former members of this household who moved out of Guyana and who have been living abroad for 6 MONTHS OR LONGER until now?	[1: Yes; 2: No]
q7_02	7.02. How many persons?	Numbers
repeat_emigrants_count	Repeat_emigrants_count	
q8_00	8.00. Who answered?	Generated by the CAPI application
q8_00a	a. Last name	String
q8_00b	b. First name	String
obs	Observations	String
timefinished	timefinished	Generated by the CAPI application
instanceid	instanceID	
instancename	instanceName	
formdef_version		Generated by the CAPI application

## **Annex 3**

### **GLFS electronic questionnaires**

---



## GLFS\_174\_HQ

Field	Question	Answer
filter_enum		
enum_note	Enumerator, enter (...):	
searchENUM (required)	Your ID:	
PASS (required)	Your password:	
searchHHID (required)	The household ID:	
filter_password		
filter_password > filter_HH		
address (required)	Tick the circle if the ADDRESS and HOUSEHOLD HEAD match the ones in your TRACKING FORM, if not, return and check your answer:	HH_key addressname
geopoint (required)	[ENUMERATOR: Collect building's GPS coordinates] Accuracy ≤ 25 meters	
Result (required) <i>If 1 ► Members ; If 2 or 3 ► Observations</i>	A. Attempt result:	1 Interview started 2 Nobody at home 3 No competent respondent 4 Other
Other_Result (required) <i>If &gt;=1 and &lt;=6 ► Observations</i>	B. Other attempt result:	1 Vacant dwelling 2 Dwelling demolished /under construction / etc. 3 Dwelling not found 4 Not a dwelling 5 Party / Funeral 6 Refusal 7 Other
Other_Result_Specify (required) ► Observations	Other result, specify:	
filter_password > filter_HH > FILTER_A		
Members (required)	How many people usually live in this household?	
filter_password > filter_HH > FILTER_A > Member number (1)		(Repeated group)
filter_password > filter_HH > FILTER_A > Member number (1) > Member_group		
q1_00 (required)	1.00. Member number	
q1_01	1.01. Full names of household members <i>Let's start/continue with the first/second/third/fourth... member</i>	
q1_01b (required)	Last name	
q1_01c (required)	First name	
filter_password > filter_HH > FILTER_A > Member number (1) > SECTION_1		
q1_02 (required)	1.02. What is [q1_01c]'s relation to the head of the household? <i>READ OPTIONS</i>	1 Head 2 Spouse/ partner 3 Son/daughter 4 Step/ adopted child 5 Grand/great-grand child 6 Son/daughter-in-law 7 Parent/parent-in-law 8 Other relative 9 Non relative
q1_03 (required)	1.03. [q1_01c]'s Sex	1 Male 2 Female
q1_04 (required)	1.04. [q1_01c]'s Age <i>If less than 1 year write 0 (zero)&lt;br/&gt; &lt;br/&gt; Completed years</i>	
Date_Birth (required)	1.04b. Date of birth	
filter_password > filter_HH > FILTER_A > Member number (1) > FILTER_FIFTEEN		
<i>Ask only if q1.04&lt;15</i>		
q1_05 (required) <i>Ask only if q1.04&gt;9</i>	1.05. What is [q1_01c]'s marital/ union status? <i>READ OPTIONS</i>	1 Not Married/ Never lived together 2 Living together 3 Married 4 Separated 5 Divorced 6 Widowed
q1_06 (required)	1.06. To what ethnic group does [q1_01c] belong? <i>READ OPTIONS</i>	1 African/ Black 2 Mixed 3 East Indian

			4 Ameridian
			5 Chinese
			6 Portuguese
			7 White
			8 Other
q1_07 (required)	1.07. In which country was [q1_01c] born?		1 Guyana
If 1 ►q1.09			2 Other Caribbean country
			3 South/Central America/Mexico
			4 U.S.A.
			5 Canada
			6 Great Britain
			7 Other European country
			8 Asia
			9 Africa
q1_08 (required)	1.08. How many years has [q1_01c] been residing in Guyana on a continuous basis?		
►q1.10			
q1_09 (required)	1.09. In which region was [q1_01c]'s mother living when s/he were born?		1 Region 1
			2 Region 2
			3 Region 3
			4 Region 4
			5 Region 5
			6 Region 6
			7 Region 7
			8 Region 8
			9 Region 9
			10 Region 10
			11 Don't know
q1_10 (required)	1.10. Where was [q1_01c] living five years ago? READ OPTIONS		1 In this city/village
			2 In another city/village of this Guyana region
			3 In another Guyana region
			4 In another country
			5 Was not born yet
q1_11 (required)	1.11. Has [q1_01c] EVER attended school?		1 Yes
If 2 ►q7.01			2 No
filter_password > filter_HH > FILTER_A > Member number (1) > FILTER_FIFTEEN > Education			
q1_12 (required)	1.12. Is [q1_01c] now enrolled in a school or in an educational institution?		1 Yes
			2 No
q1_13 (required)	1.13. What is the highest level of education that [q1_01c] has ATTENDED?		1 Pre-primary
If 1 ►q7.01			2 Primary
			3 Secondary
q1_14 (required)	1.14. What class did [q1_01c] COMPLETE?		1 None
►q1.16			2 Prep A & B/ Grds 1 & 2
			3 Std 1/Grd 3
			4 Std 2/Grd 4
			5 Std 3/Grd 5
			6 Std 4/Grd 6
			7 Frm 1/Grd 7
			8 Frm 2/Grd 8
			9 Frm 3/Grd 9
			10 Frm 4/Grd 10
			11 Frm 5/Grd 11
			12 Frm 6/Grd 12
q1_16 (required)	1.16. What is the highest examination that [q1_01c] has passed?		1 None
			2 School leaving
			3 College of Preceptors (CP)
			4 Junior Cambridge Cert
			5 CXC Basic
			6 GCE O' levels/CXC 1-2
			7 GCE O' levels/CXC 3-4
			8 GCE O' levels/CXC 5+
			9 High School/Senior Cambridge Certificate

			10	GCE A' levels/CAPE A: 1-2
			11	GCE A' levels/CAPE A: 3+
q7_01 (required)	7.01. Are there any former members of this household who moved out of Guyana and who have been living abroad for 6 MONTHS OR LONGER until now?		1	Yes
If 2 ► q8.00			2	No
q7_02 (required)	7.02. How many persons?			
filter_password > filter_HH > FILTER_A > Former member (1)			(Repeated group)	
filter_password > filter_HH > FILTER_A > Former member (1) > Emigrant_name				
q7_03	7.03. What are the names of these former household members? <i>Let's start/continue with the first/second/third/fourth... former member</i>			
q7_03a (required)	Last name			
q7_03b (required)	First Name			
q7_04 (required)	7.04. What is [q7_03b]'s relation to the head of THIS household?		2	Spouse/ partner
			3	Son/daughter
			4	Step/ adopted child
			5	Grand/great-grand child
			6	Son/daughter-in-law
			7	Parent/parent-in-law
			8	Other relative
			9	Non relative
filter_password > filter_HH > FILTER_A > Former member (1) > sex_age_e				
q7_05 (required)	7.05. [q7_03b]'s Sex		1	Male
			2	Female
q7_06 (required)	7.06. [q7_03b]'s Age <i>If less than 1 year write 0 (zero)&lt;br/&gt; &lt;br/&gt; Completed years</i>			
q7_07 (required)	7.07. What is the highest level of education that [q7_03b] COMPLETED? <i>READ OPTIONS</i>		1	None
If <4 ► q7.09			2	Primary
			3	Secondary
			4	Technical/Vocational Certificate or Diploma
			5	University / Certificate /Diploma
			6	Short Cycle Tertiary
			7	Bachelor's degree
			8	Post graduate Certificate or Diploma
			9	Masters
			10	Doctoral
			11	Don't know
q7_08 (required)	7.08. What did [q7_03b] study?			
q7_09 (required)	7.09. In what year did [q7_03b] move out of Guyana? <i>Examples: 1989, 2004, 2015&lt;br/&gt; &lt;br/&gt; If does not know, write "-1"</i>			
If !=-1 ► q7.11				
q7_10 (required)	7.10. In what period did [q7_03b] move out of Guyana? <i>READ OPTIONS</i>		1	Before 1970
			2	1970 - 1979
			3	1980 - 1989
			4	1990 - 1999
			5	2000 - 2009
			6	2010 or after
q7_11 (required)	7.11. What was the MOST IMPORTANT reason for [q7_03b] moving out of Guyana?		1	More income
			2	Work
			3	Study
			4	Marriage
			5	Family Reunification
			6	Political reasons
			7	Crime situation
			8	Other
			9	Don't know
q7_12 (required)	7.12. In what country is [q7_03b] living now?		1	Caribbean country
			2	South America
			3	U.S.A.
			4	Canada
			5	Great Britain
			6	Other European country
			7	Asia
			8	Africa

		9 Other
filter_password > filter_HH > FILTER_A > Former member (1) > Fifteen_years		
Ask only if q7.06>14		
q7_13 (required)	7.13. Had [q7_03b] ever worked before leaving Guyana?	1 Yes
If 2 ► q7.16		2 No
filter_password > filter_HH > FILTER_A > Former member (1) > Fifteen_years > FILTER_1		
q7_14 (required)	7.14. What was [q7_03b]'s employment status in the LAST JOB SHE/HE HAD IN GUYANA? READ OPTIONS	1 Employee (for another person, for a company or for the government)
		2 Unpaid family workers
		3 Self-employed (without paid help)
		4 Self-employed (with paid help)
		5 Don't know
q7_15 (required)	7.15. What kind of work did [q7_03b] perform in his/her LAST JOB IN GUYANA (job title)? (i.e. Primary teacher, taxi driver, crop farmer, etc.)	
q7_16 (required)	7.16. What is [q7_03b]'s current MAIN activity?	1 Working
If 1 ► q8.00		2 Looking for work
		3 Keeping the house
		4 Studying
		5 Retired
		6 Incapacitated
		7 Other
		8 Don't know
q7_17 (required)	7.17. Is [q7_03b] currently working?	1 Yes
		2 No
		3 Don't know
END_1	END OF THIS FORMER MEMBER	
filter_password > filter_HH > FILTER_A > Respondent		
q8_00	8.00. Who answered?	
q8_00a (required)	a. Last name	
q8_00b (required)	b. First name	
Obs	Observations	
error_2	Sorry, return and check your answer. Your HOUSEHOLD ID is wrong!!	
error_1	Sorry, return and check your answer. Your ID or/and password is/are wrong!!	

## GLFS\_174\_IQ

Field	Question	Answer
filter_enum		
enum_note	Enumerator, enter (...):	
searchENUM (required)	Your ID:	
pass (required)	Your password:	
searchhhid (required)	The household ID:	
filter_password		
filter_password > filter_HH		
address (required)	Tick the circle if the ADDRESS and HOUSEHOLD HEAD match the ones in your TRACKING FORM, if not, return and check your answer:	HH_key addressname
filter_password > filter_HH > MEM_NAME		
q1_00 (required)	1.00. Member number <i>Household head must be number 1</i>	
q1_01 (required)	1.01. First name	
Result (required) <i>If 1 ► q1.02 ; If &gt;=2 and &lt;=4 ► Observations</i>	A. Attempt result:	<div>1 Interview started</div> <div>2 Not at home</div> <div>3 Respondent asks me to come later</div> <div>4 Refusal</div> <div>5 Other</div>
result_other_specify (required) <i>► Observations</i>	Other reason, specify:	
filter_password > filter_HH > Result_group		
q1_02 (required)	1.02. What is your relation to the head of the household? <i>READ OPTIONS</i>	<div>1 Head</div> <div>2 Spouse/ partner</div> <div>3 Son/daughter</div> <div>4 Step/ adopted child</div> <div>5 Grand/great-grand child</div> <div>6 Son/daughter-in-law</div> <div>7 Parent/parent-in-law</div> <div>8 Brother/sister</div> <div>9 Other relative</div> <div>10 Non relative</div>
filter_password > filter_HH > Result_group > FILTER_A		
q1_03 (required)	1.03. Sex	<div>1 Male</div> <div>2 Female</div>
q1_04 (required)	1.04. Age <i>Completed years</i>	
date_birth (required)	1.04b. Date of birth	
q1_05 (required)	1.05. What is your marital / union status? <i>READ OPTIONS</i>	<div>1 Not Married/ Never lived together</div> <div>2 Living together</div> <div>3 Married</div> <div>4 Separated</div> <div>5 Divorced</div> <div>6 Widowed</div>
q1_06 (required)	1.06. To what ethnic group do you belong? <i>READ OPTIONS</i>	<div>1 African/ Black</div> <div>2 Mixed</div> <div>3 East Indian</div> <div>4 Ameridian</div> <div>5 Chinese</div> <div>6 Portuguese</div> <div>7 White</div> <div>8 Other</div>
q1_07 (required) <i>If 1 ► q1.09</i>	1.07. In which country were you born?	<div>1 Guyana</div> <div>2 Other Caribbean country</div> <div>3 South/Central America/Mexico</div> <div>4 U.S.A.</div> <div>5 Canada</div> <div>6 Great Britain</div> <div>7 Other European country</div>

			8 Asia
			9 Africa
			10 Other
q1_08 (required)	1.08. How many years have you been residing in Guyana on a continuous basis?		
►q1.10			
q1_09 (required)	1.09. In which region was your mother living when you were born?	1 Region 1	
		2 Region 2	
		3 Region 3	
		4 Region 4	
		5 Region 5	
		6 Region 6	
		7 Region 7	
		8 Region 8	
		9 Region 9	
		10 Region 10	
		11 Do not know	
q1_10 (required)	1.10. Where were you living five years ago? READ OPTIONS	1 In this city/village	
		2 In another city/village of this Guyana region	
		3 In another Guyana region	
		4 In another country	
q1_11 (required)	1.11. Have you EVER attended school?	1 Yes	
If 2 ►q2.01		2 No	
filter_password > filter_HH > Result_group > Education			
q1_12 (required)	1.12. Are you now enrolled in a school or in an educational institution?	1 Yes	
		2 No	
q1_13 (required)	1.13. What is the highest level of education that you have ATTENDED?	1 Pre-primary	
If 1 ►q2.01 ; If 4 or 5 ►q1.15		2 Primary	
		3 Secondary	
		4 Post-secondary	
		5 University / Tertiary	
q1_14 (required)	1.14. What class did you COMPLETE?	1 None	
►q1.16		2 Prep A & B/ Grds 1 & 2	
		3 Std 1/Grd 3	
		4 Std 2/Grd 4	
		5 Std 3/Grd 5	
		6 Std 4/Grd 6	
		7 Frm 1/Grd 7	
		8 Frm 2/Grd 8	
		9 Frm 3/Grd 9	
		10 Frm 4/Grd 10	
		11 Frm 5/Grd 11	
		12 Frm 6/Grd 12	
q1_15 (required)	1.15. What is the highest post-secondary level/degree that you have COMPLETED? READ OPTIONS	1 None	
		2 Technical/Vocational Certificate or Diploma	
		3 University Certificate or Diploma	
		4 Bachelor's degree	
		5 Post graduate Certificate or Diploma	
		6 Masters	
		7 Doctoral	
q1_16 (required)	1.16. What is the highest examination that you have passed? READ OPTIONS	1 None	
		2 School leaving	
		3 College of Preceptors (CP)	
		4 Junior Cambridge Cert	
		5 CXC Basic	
		6 GCE O' levels/CXC 1-2	
		7 GCE O' levels/CXC 3-4	
		8 GCE O' levels/CXC 5+	
		9 High School/Senior Cambridge Certificate	

				10	GCE A' levels/CAPE A: 1-2
				11	GCE A' levels/CAPE A: 3+
filter_password > filter_HH > Result_group > Fifteen_years					
	q2_01 (required)	2.01. In the LAST 12 MONTHS have you received training for any occupation (for example: on computers, cosmetology, hairdressing, mechanics, etc.)?		1	Yes
	If 1 ►q2.02 ; If 2 ►q2.04	(i.e. training on specific skills to be directly used for working and not part of the formal educational system).		2	No
filter_password > filter_HH > Result_group > Fifteen_years > FILTER_1					
	q2_02 (required)	2.02. In what subject was your last training?			
	q2_03 (required)	2.03. Where did you acquire MOST of this training?		1	Apprenticeship
				2	On the job
				3	Correspondence Course
				4	Virtual/Internet Learning
				5	On-site private institution
				6	On-site government
				7	Other
	q2_04 (required)	2.04. In the LAST 7 DAYS, did you do any work for a wage, salary or tips EVEN IF ONLY FOR ONE HOUR?		1	Yes
	If 1 ►q3.01			2	No
	q2_05 (required)	2.05. In the LAST 7 DAYS, did you run or do any kind of business or farming, alone or with others, to generate income EVEN IF ONLY FOR ONE HOUR?		1	Yes
	If 1 ►q2.08	(e.g: growing or raising animals for sale, making things for sale, buying and reselling things, providing services for pay)		2	No
	q2_06 (required)	2.06. In the LAST 7 DAYS did you do any of the following activities EVEN IF ONLY FOR ONE HOUR?			
	If 1 or/and 2 ►q3.01	Check all that applies     READ OPTIONS		1	1. Cooking for sale or other food procesing activities for sale
				2	2. Making baskets, mats or other handicrafts for sale
				99	None of the above (INTERVIEWER: DO NOT READ)
filter_password > filter_HH > Result_group > Fifteen_years > FILTER_2					
	q2_07 (required)	2.07. In the LAST 7 DAYS, did you help unpaid in a business or farm owned by a household member, EVEN IF ONLY FOR ONE HOUR?		1	Yes
	If 2 ►q2.10			2	No
	q2_08 (required)	2.08. Was this work in agriculture, livestock rearing or fishing?		1	Yes
	If 2 ►q3.01			2	No
filter_password > filter_HH > Result_group > Fifteen_years > FILTER_2 > FILTER_3					
	q2_09 (required)	2.09. IN GENERAL, are the products obtained from this activity for sale/ barter or are they for family use?		1	Only for sale/barter
	If 1 or 2 ►q3.01	READ OPTIONS		2	Mainly for sale/ barter
				3	Mainly for family use
				4	Only for family use
filter_password > filter_HH > Result_group > Fifteen_years > FILTER_2 > FILTER_3 > FILTER_4					
	q2_10 (required)	2.10. In the LAST 7 DAYS, were you absent from a paid job or a business, including a household business, to which you will return?		1	Yes
	If 2 ►q2.14	(Waiting for a new job to start does not count as temporary absences)		2	No
	q2_11 (required)	2.11. Why were you absent from your work in the LAST 7 DAYS?		1	Shift work, flexi time
	If 1, 2, 3 or 4 ►q3.01			2	Holiday/Vacation
	; If 12 or 13 ►q2.14			3	Sickness
				4	Maternity/paternity/annual leave
				5	Study or training
				6	Other personal reasons (care for family, civic duties, ...)
				7	Problems with transport, equipment
				8	Bad weather
				9	Temporary reduction in clients, work break
				10	Strike or labour dispute
				11	Long-term disability
				12	Off season
				13	Waiting for new job
				14	Other reason
filter_password > filter_HH > Result_group > Fifteen_years > FILTER_2 > FILTER_3 > FILTER_4 > FILTER_5					
	q2_12 (required)	2.12. Including the time that you have been absent, will you return to that same work...?		1	Within 3 months or less
	If 1 ►q3.01	READ OPTIONS		2	After 3 months
				3	Not sure to return

filter_password > filter_HH > Result_group > Fifteen_years > FILTER_2 > FILTER_3 > FILTER_4 > FILTER_5 > FILTER_5_1			
	q2_13 (required) If 1 ►q3.01	2.13. Do you continue receiving an income from your job during this absence?	1 Yes
			2 No
filter_password > filter_HH > Result_group > Fifteen_years > FILTER_2 > FILTER_3 > FILTER_4 > FILTER_5 > FILTER_5_1 > FILTER_5_2			
	q2_14 (required) If 2 ►q2.16	2.14. During the LAST 30 DAYS, did you look for a job or tried to start a business?	1 Yes
			2 No
	q2_15 (required) If >=1 and <=10 or 99 ►q2.18	2.15. What did you MAINLY do in the LAST 30 DAYS to find a job or to try to start a business?	1 Applied/contacted organizations/employers
			2 Cheched at work sites, markets, etc.
			3 Placed or answered job advertisements
			4 Sought assistance of friends or relatives
			5 Looked for land, building, machinery or equipment or raw materials
			6 Arranged for financial resources
			7 Applied for license or permit
			8 Registered with Labour Exchange Office
			9 Took a test or interview
			10 Social media (Facebook, internet, etc.)
			11 Nothing (this confirms no job search)
			99 Other
	q2_16 (required) If 2 ►q2.19	2.16. Even though you did not look for work in the LAST 30 DAYS, do you want to work for pay or profit?	1 Yes
			2 No
	q2_17 (required) If >=2 ►q2.19	2.17. What was the MAIN reason why you did not seek work or try to start a business during the LAST 30 DAYS? READ OPTIONS	1 Found work but waiting to start
			2 Awaiting replies to earlier enquiries
			3 Awaiting for the season to start
			4 Attended school/training courses
			5 Family responsibilities or housework
			6 Illness, injury or disability
			7 Too young/old to find work
			8 Does not know where to look for work
			9 Lacks employers' requirements (skills, experience, qualifications)
			10 No jobs available in the area
			99 Other reasons
	q2_18 (required)	2.18. How long have you been without work and trying to find a job or start a business?	1 Less than 3 months
			2 3 to 5 months
			3 6 to 12 months
			4 1 to 2 years
			5 3 to 4 years
			6 5 years or more
			7 Don't know
	q2_19 (required) If 1 or 2 and q2.15!=11 ►q4.01 ; If 1 or 2 and q2.15=11 ►q5.01 ; If 1 or 2 and q2.14=2 ►q5.01	2.19. If an opportunity to work for pay or to start a business became available, could you have started or start working? READ OPTIONS	1 Yes, in the last 7 days
			2 Yes, within the next two weeks
			3 No



q2_20 (required)	2.20. What is the MAIN reason why you do not want or you are not available to work?	1 In school/ training
►q5.01		2 Housework/ family responsibilities
		3 Illness, injury, disability
		4 Retired, too old for work
		5 Off-season
		6 Working conditions not acceptable
		7 Engaged in subsistence farming/fishing
		8 Other
filter_password > filter_HH > Result_group > Fifteen_years > FILTER_6		
q3_01 (required)	3.01. In the LAST 7 DAYS did you have more than one job or economic activity?	1 Yes
If 2 ►q3.03		2 No
q3_02 (required)	3.02. What is the MAIN reason for you holding more than one job?	1 Additional income needed
		2 Financial independence
		3 Hobby
		4 Did not get a full time job
		5 Other
q3_03 (required)	3.03. How many hours do you USUALLY work PER WEEK in your MAIN JOB (the one that takes more hours)? (number of hours)	
q3_04 (required)	3.04. How many hours do you USUALLY work per week in your other jobs? (number of hours)	
Ask only if q3.01=1		
q3_05 (required)	3.05. Total hours USUALLY worked per week (number of hours)	
Ask only if q3.01=1		
q3_06 (required)	3.06. What is the MAIN reason why you USUALLY work less than 40 hours per week?	1 Cannot find more work
As only if q3.05<40 or if q3.01=2 and q3.03<40		2 Lack of raw materials, finances, equipment etc
		3 Machinery, electrical, other breakdown
		4 Reduction in economic activity/slack period, off season
		5 Does not want more work, has sufficient work
		6 Full time work is less than 40 hrs/wk
		7 Personal / family responsibilities
		8 Student, unpaid training
		9 Own ill health, incapacity to work
		10 Climate/nature
		11 Other
filter_password > filter_HH > Result_group > Fifteen_years > FILTER_6 > working_hours		
q3_07	3.07. And IN THE LAST 7 DAYS, how many hours did you ACTUALLY work in your MAIN JOB (the one that takes more hours)? (number of hours)	
q3_07_1 (required)	Monday	
q3_07_2 (required)	Tuesday	
q3_07_3 (required)	Wednesday	
q3_07_4 (required)	Thursday	
q3_07_5 (required)	Friday	
q3_07_6 (required)	Saturday	
q3_07_7 (required)	Sunday	
q3_08 (required)	3.08. IN THE LAST 7 DAYS how many hours did you ACTUALLY work in your other jobs? (number of hours)	
Ask only if q3.01=1		
q3_11 (required)	3.11. Would you want to work more hours for pay or profit than you USUALLY work?	1 Yes
If 2 ►q3.13		2 No
q3_12 (required)	3.12. If an opportunity for additional work became available, could you start working more hours within the next 30 days?	1 Yes
		2 No
q3_13 (required)	3.13. Have you ever TRIED to work more hours in this job or in another job?	1 Yes
		2 No

If 2 ►q3.16		
filter_password > filter_HH > Result_group > Fifteen_years > FILTER_6 > FILTER_7		
q3_14 (required)	3.14. When was the LAST TIME you tried to do this?	<div>1 In the past 30 days</div> <div>2 From 1 month to less than 3 months ago</div> <div>3 From 3 months to less than 6 months ago</div> <div>4 From 6 months to less than 12 months ago</div> <div>5 12 months ago and over</div>
q3_15 (required) If >=1 and <=10 ►q3.16	3.15. What did you MAINLY do when you tried to work more hours?	<div>1 Register at public employment exchange</div> <div>2 Register at private employment exchange</div> <div>3 Direct application</div> <div>4 Checking at work sites, farms, factory gates, markets, etc</div> <div>5 Answering advertisements</div> <div>6 Seeking assistance of friends, relatives, colleagues, unions, etc</div> <div>7 Asked my boss to work more hours in my current job</div> <div>8 Looking for land, building, etc to establish, own business</div> <div>9 Arranging for financial resources, applying for permits, lincenses to start your own business</div> <div>10 Tried to get new clients</div> <div>11 Other</div>
q3_15b (required)	3.15b. Specify:	
q3_16 (required) If 1 ►q3.18 ; If 2 ►q3.30	3.16. What is your employment status in your MAIN JOB? READ OPTIONS	<div>1 Employee (for another person, for a company or for the government)</div> <div>2 Unpaid family worker</div> <div>3 Self-employed (without paid help)</div> <div>4 Self-employed (with paid help)</div>
q3_17 (required) If 1 or 2 ►q3.27	3.17. Are you a farmer?	<div>1 Yes</div> <div>2 No</div>
filter_password > filter_HH > Result_group > Fifteen_years > FILTER_6 > FILTER_8		
q3_18 (required)	3.18. Are you working on the basis of a written contract or is it on the basis of a verbal agreement?	<div>1 A written contract</div> <div>2 A verbal agreement</div>
q3_19 (required) If 2 ►q3.22	3.19. Is your contract or agreement of a limited time duration or is it permanent without time limit?	<div>1 Limited time</div> <div>2 Permanent without time limit</div>
filter_password > filter_HH > Result_group > Fifteen_years > FILTER_6 > FILTER_8 > FILTER_9		
q3_20 (required)	3.20. What is the duration of your contract or agreement?	<div>1 Daily</div> <div>2 2 days or more but less than 1 month</div> <div>3 1 month or more but less than 3 months</div> <div>4 3 months or more but less than 6 months</div> <div>5 6 months or more but less than 12 months</div> <div>6 12 months or more but less than 24 months</div> <div>7 24 months or more</div>
q3_21 (required)	3.21. How long have you been employed by your current employer based on a fixed term contract or agreement?	<div>1 Less than 6 months</div> <div>2 6 months or more but less than 1 year</div> <div>3 1 year or more but less than 2</div>

				years
			4	2 years or more but less than 3 years
			5	3 years or more
	q3_22 (required)	3.22. Do you benefit from paid annual leave?	1	Yes
			2	No
	q3_23 (required)	3.23. Do you benefit from compensation for unused leave?	1	Yes
			2	No
			3	Don't know
	q3_24 (required)	3.24. Do you benefit from paid sick leave in case of illness?	1	Yes
			2	No
	q3_25 (required)	3.25. If you had a baby, would you benefit from maternity/paternity leave?	1	Yes
			2	Possibly
			3	No
	q3_26 (required)	3.26. Does your employer deduct contributions for the NIS (National Insurance Scheme)?	1	Yes
			2	No
filter_password > filter_HH > Result_group > Fifteen_years > FILTER_6 > FILTER_10				
	q3_27 (required)	3.27. Are you a member of any union or professional association or employers association?	1	Yes
			2	No
	<div style="border: 1px dashed black; padding: 2px;">           If 1 or 2 and q3.16=1            ► q3.29         </div>			
	q3_28 (required)	3.28. What kind of accounts or records does your enterprise keep? <i>READ OPTIONS</i>	1	Complete set of written accounts for tax purposes
			2	Simplified written accounts not for tax purposes
			3	Only through informal records of orders, sales, purchases
			4	No records are kept
	q3_29 (required)	3.29. Are you contributing BY YOURSELF to any social security scheme, such as (...)? <i>Check all that applies&lt;br/&gt; READ OPTIONS</i>	1	NIS (National Insurance)
			2	Private insurance for pension or health
			3	None of the above (INTERVIEWER: DO NOT READ)
	q3_30 (required)	3.30. What is the name of the company, shop or place where you work? <i>WRITE IN DETAIL (i.e. Bureau of Statistics, Joe's grocery shop, greengrocery, etc.)</i>		
	q3_31 (required)	3.31. What are the MAIN products or services produced at your workplace? <i>WRITE IN DETAIL</i>		
filter_password > filter_HH > Result_group > Fifteen_years > FILTER_6 > searchopt				
	searchtype (required)	Search type:	contains	Contains
			matches	Matches
			startswith	Starts with
			endswith	Ends with
	searchtext (required)	3.29. <i>Industry code</i>		
	isic_code (required)	3.29. Choose the Industry:	ISIC_Code	ISIC
	q3_32 (required)	3.32. What is your job? <i>WRITE IN DETAIL (i.e. Primary teacher, taxi driver, crop farmer, etc.)</i>		
	q3_33 (required)	3.33. What are your most important activities or duties? <i>WRITE IN DETAIL (a brief description of the main duties)</i>		
filter_password > filter_HH > Result_group > Fifteen_years > FILTER_6 > searchopt_2				
	searchtype_2 (required)	Search type:	contains	Contains
			matches	Matches
			startswith	Starts with
			endswith	Ends with
	searchtext_2 (required)	3.32. <i>Occupation code</i>		
	isco_code (required)	3.32. Choose the Occupation:	ISCO_Code	ISCO
filter_password > filter_HH > Result_group > Fifteen_years > FILTER_6 > FILTER_Q3_14_1				
	q3_34 (required)	3.34. What is the type of ownership of your business/place where you are employed?	1	Business owned by individual, family or partners
			2	Corporate business/company (un-limited)
			3	Government (Central or Local)
			4	State enterprise/public body
			5	Other non-governmental private organization

q3_35 (required) If 3 or 4 ► q3.37	3.35. Is your business or the enterprise in which you work registered in any national, state or professional agency, or is in the process of being registered?	1 Yes, registered 2 In Process 3 No 4 Don't know
q3_36 (required)	3.36. Where is your business or the enterprise in which you work registered, or in the process of being registered? Check all that applies    READ OPTIONS	1 GRA (Guyana Revenue Authority) 2 NIS (National Insurance Scheme) 3 Registered at the Registrar (High Court) 4 Business Certificate of the Ministry of Commerce 5 Do not know (INTERVIEWER: DO NOT READ) 6 None of the above (INTERVIEWER: DO NOT READ)
q3_37 (required)	3.37. Where is your business or the enterprise in which you work located?	1 In a fixed factory, office 2 In a fixed shop, store 3 In a market place licensed stall (where goods are removed each day) 4 In your home or the business owner's home, without separate workspace 5 In your home or the business owner's home, but a separate workspace (whether inside or attached to the home) 6 On the side walk of the street or public space (not an official market) 7 On an empty, private lot 8 As a moving vendor 9 In a taxi/bus 10 In a farm or agricultural plot 11 In a construction site 12 Other
q3_38 (required) If 1 ► q3.40	3.38. How many persons (including yourself) USUALLY work in the establishment or business where you operate?	1 1 person 2 2 to 4 persons 3 5 to 9 persons 4 10 to 19 persons 5 20 to 49 persons 6 50 or more persons
q3_39 (required)	3.39. How many of these persons are family members of the business owner?	1 1 person 2 2 to 4 persons 3 5 to 9 persons 4 10 to 49 persons 5 50 or more persons 6 None 7 Don't know
q3_40 (required)	3.40. How long ago did you start working in this enterprise / business / for this employer?	1 Less than 6 months 2 6 months or more but less than 1 year 3 1 year or more but less than 5 years 4 5 years or more but less than 10 years 5 10 years or more
q3_41 (required) If q3.16=1 ► q6.01 ; if q3.16=2 ► q6.10 ; if q3.16=3 or 4 ► q6.06	3.41. What is your MAIN source of financial support? READ OPTIONS	1 Yourself 2 Spouse/Partner 3 Parents 4 Son/daughter 5 Other relatives/friends in Guyana 6 Remittances from abroad

			7	Savings/Investment
			8	Pension
			9	Unemployment benefit
			10	Social assistance
			11	Others
filter_password > filter_HH > Result_group > Fifteen_years > FILTER_11				
	q4_01 (required)	4.01. How long ago have you been without work and seeking for work?	1	Less than 1 month
			2	1 month and less than 3 months
			3	3 months and less than 6 months
			4	6 months and less than 12 months
			5	12 months or more
	q4_02 (required)	4.02. Have you ever worked or had a job?	1	Yes
	If 2 ►q4.09		2	No
filter_password > filter_HH > Result_group > Fifteen_years > FILTER_11 > FILTER_12				
	q4_03 (required)	4.03. What is the MAIN reason why you stopped working?	1	Individual dismissal
			2	Job completed
			3	Insufficient payment
			4	Resigned to study
			5	Resigned to take care of children
			6	Enterprise proceeded to mass dismissals
			7	Business failed
			8	Moved to a new area
			9	Other
	q4_04 (required)	4.04. How many hours per week did you USUALLY work in your last job?		
	q4_05 (required)	4.05. What was your employment status in your LAST JOB? READ OPTIONS	1	Government employee
	If 1, 2 ►q4.07 ; If 3 ►q4.08		2	Private employee (work for another person or company)
			3	Unpaid family worker
			4	Self-employed (without paid help)
			5	Self-employed (with paid help)
	q4_06 (required)	4.06. Were you a farmer in your LAST JOB?	1	Yes
	►q4.08		2	No
	q4_07 (required)	4.07. What type of worker were you in your last job? READ OPTIONS	1	Paid Permanent
			2	Paid Temporary
			3	Paid Casual
			4	Home Worker/Sub Contractor
			5	Paid apprentice/intern
			6	Other Unpaid Worker
	q4_08 (required)	4.08. In what country was this last job?	1	Guyana
			2	Other Caribbean country
			3	South/Central America/Mexico
			4	U.S.A.
			5	Canada
			6	Great Britain
			7	Other European country
			8	Asia
			9	Africa
			10	Other
	q4_09 (required)	4.09. What is your MAIN source of financial support? READ OPTIONS	1	Yourself
	►q6.11		2	Spouse/Partner
			3	Parents
			4	Son/Daughter
			5	Pension
			6	Savings
			7	Social assistance
			8	Friends/Other relatives in

				Guyana
			9	Friends/Other relatives abroad
			10	Others
filter_password > filter_HH > Result_group > Fifteen_years > FILTER_13				
	q5_01 (required)	5.01. To which of the following groups do you belong? READ OPTIONS		1 Student
				2 Housewife
				3 Retired/ Old age
				4 Unable to work
				6 Other
	q5_02 (required)	5.02. Have you ever worked, either for others or in your own business?		1 Yes
	If 2 ► q5.07			2 No
filter_password > filter_HH > Result_group > Fifteen_years > FILTER_13 > FILTER_14_1				
filter_password > filter_HH > Result_group > Fifteen_years > FILTER_13 > FILTER_14_1 > FILTER_15_1				
	q5_03	5.03. How long ago did you stop working? If less than 1 month write 0 (zero)		
	q5_03a (required)	Years		
	q5_03b (required)	Months		
	q5_04 (required)	5.04. What was your employment status in your last job? READ OPTIONS		1 Government employee
	If 1, 2 or 3 ► q5.06			2 Private employee (work for another person or company)
				3 Unpaid family worker
				4 Self-employed (without paid help)
				5 Self-employed (with paid help)
	q5_05 (required)	5.05. Were you a farmer in your LAST JOB?		1 Yes
				2 No
	q5_06 (required)	5.06. In what country was this last job?		1 Guyana
				2 Other Caribbean country
				3 South/Central America/Mexico
				4 U.S.A.
				5 Canada
				6 Great Britain
				7 Other European country
				8 Asia
				9 Africa
				10 Other
	q5_07 (required)	5.07. What was your MAIN source of financial support during the LAST 7 DAYS? READ OPTIONS		1 Yourself
	► q6.11			2 Spouse/Partner
				3 Parents
				4 Son/Daughter
				5 Pension
				6 Savings
				7 Social assistance
				8 Friends/Other relatives in Guyana
				9 Friends/Other relatives abroad
				10 Others
filter_password > filter_HH > Result_group > Fifteen_years > FILTER_14_A				
	q6_01 (required)	6.01. Still talking about your MAIN JOB. What was your income IN THE LAST MONTH IN TERMS OF NET salary? If does not know or does not want to answer, write "-1"  If No, write 0 (zero)  GYD		
	If >=0 ► q6.02			
filter_password > filter_HH > Result_group > Fifteen_years > FILTER_14_A > FILTER_15				
	q6_01b (required)	6.01b. And from the following options, what was your income IN THE LAST MONTH IN TERMS OF NET salary? SHOW FLASH CARD    Main employment (GYD)		0 A) Zero (0)
				1 B) \$1 – \$8,000
				2 C) \$8,001 – \$13,000
				3 D) \$13,001 – \$20,000
				4 E) \$20,001 – \$50,000
				5 F) \$50,001 – \$100,000
				6 G) \$100,001 – \$150,000
				7 H) \$150,001 – \$200,000
				8 I) \$200,001 – \$300,000
				9 J) \$300,001 – \$400,000

			10	K) \$400,001 – \$500,000
			11	L) \$500,001 – \$1,000,000
			12	M) \$1,000,001 or more
			99	N) Does not know
			98	O) Does not want to answer
filter_password > filter_HH > Result_group > Fifteen_years > FILTER_14_A > FILTER_16				
	q6_02	6.02. Did you receive (...) in the LAST MONTH?		
	q6_02a (required)	a.Comissions, benefits, provisions	1	Yes
			2	No
	q6_02b (required)	b. Overtime pay (NET)	1	Yes
			2	No
	q6_02c (required)	c. Travel/other allowances	1	Yes
			2	No
	q6_02d (required)	d. Bonus	1	Yes
			2	No
	q6_02e (required)	e. Special holiday pay	1	Yes
			2	No
	q6_02f (required)	f. Job related Government transfers (accident, illness, maternity)	1	Yes
			2	No
filter_password > filter_HH > Result_group > Fifteen_years > FILTER_14_B				
	q6_03	6.03. In your MAIN JOB, did you receive any COMPENSATIONS IN KIND in THE LAST MONTH? Such as (...)		
	q6_03a (required)	a. Food and drinks	1	Yes
			2	No
	q6_03b (required)	b. Housing and related services	1	Yes
			2	No
	q6_03c (required)	c. Health care (including for your family members)	1	Yes
			2	No
	q6_03d (required)	d. Transportation (vehicle, gas, tolls)	1	Yes
			2	No
	q6_03e (required)	e. Clothes	1	Yes
			2	No
	q6_03f (required)	f. Nurseries or child care	1	Yes
			2	No
	q6_03g (required)	g. Education for children	1	Yes
			2	No
	q6_03h (required)	h. Products or services of the enterprise you work for	1	Yes
			2	No
	q6_03i (required)	i. Any other type of in-kind pay	1	Yes
			2	No
filter_password > filter_HH > Result_group > Fifteen_years > FILTER_14_C				
	q6_04	6.04. What was your income FOR THE LAST MONTH IN TERMS OF (...)? Main Job		
	q6_04a (required)	a. Comissions, benefits, provisions GYD		
	Ask only if q6.02a=1			
	q6_04b (required)	b. Overtime pay (NET) GYD		
	Ask only if q6.02b=1			
	q6_04c (required)	c. Travel/other allowances GYD		
	Ask only if q6.02c=1			
	q6_04d (required)	d. Bonus GYD		
	Ask only if q6.02d=1			
	q6_04e (required)	e. Special holiday pay GYD		
	Ask only if q6.02e=1			
	q6_04f (required)	f. Job related Government transfers (accident, illness, maternity) GYD		
	Ask only if q6.02f=1			
filter_password > filter_HH > Result_group > Fifteen_years > FILTER_14_D				
	q6_05	6.05. IN THE LAST MONTH, what would be the approximate value of such COMPENSATIONS if you had to pay for them? Main Job		
	q6_05a (required)	a. Food and drinks GYD		
	Ask only if q6.03a=1			

q6_05b (required)	b. Housing and related services GYD	
Ask only if q6.03b=1		
q6_05c (required)	c. Health care (including for your family members) GYD	
Ask only if q6.03c=1		
q6_05d (required)	d. Transportation (vehicle, gas, tolls) GYD	
Ask only if q6.03d=1		
q6_05e (required)	e. Clothes GYD	
Ask only if q6.03e=1		
q6_05f (required)	f. Nurseries or child care GYD	
Ask only if q6.03f=1		
q6_05g (required)	g. Education for children GYD	
Ask only if q6.03g=1		
q6_05h (required)	h. Products or services of the enterprise you work for GYD	
Ask only if q6.03h=1		
q6_05i (required)	i. Any other type of in-kind pay GYD	
Ask only if q6.03i=1		
q6_06 (required)	6.06b. If your business is making a profit, what cash amount did you withdraw from it during THE LAST MONTH? If does not know or does not want to answer, write "-1"  If No, write 0 (zero)  GYD	
If >=0 ▶ q6.07		
q6_06b (required)	6.06b. If your business is making a profit, what cash amount did you withdraw from it during THE LAST MONTH? SHOW FLASH CARD	<div>0 A) Zero (0)</div> <div>1 B) \$1 – \$8,000</div> <div>2 C) \$8,001 – \$13,000</div> <div>3 D) \$13,001 – \$20,000</div> <div>4 E) \$20,001 – \$50,000</div> <div>5 F) \$50,001 – \$100,000</div> <div>6 G) \$100,001 – \$150,000</div> <div>7 H) \$150,001 – \$200,000</div> <div>8 I) \$200,001 – \$300,000</div> <div>9 J) \$300,001 – \$400,000</div> <div>10 K) \$400,001 – \$500,000</div> <div>11 L) \$500,001 – \$1,000,000</div> <div>12 M) \$1,000,001 or more</div> <div>99 N) Does not know</div> <div>98 O) Does not want to answer</div>
filter_password > filter_HH > Result_group > Fifteen_years > FILTER_33		
If q3.17=2 ▶ q6.07 ; If q3.17=1 ▶ q6.08		
q6_07 (required)	6.07. IN THE LAST MONTH, If you used products or services of your business to consume at home, what is the commercial value of such products and services? If No, write 0 (zero)  GYD	
▶ q6.10		
filter_password > filter_HH > Result_group > Fifteen_years > FILTER_34		
q6_08 (required)	6.08. In THE LAST MONTH, did you eat at home any foods from your own production? (i.e. from your own vegetables, from your own farm, etc.)	<div>1 Yes</div> <div>2 No</div>
If 2 ▶ q6.10		
q6_09 (required)	6.09. If you had to pay for these products, what would be their value? GYD	
filter_password > filter_HH > Result_group > Fifteen_years > FILTER_14_E		
q6_10 (required)	6.10. In the last month, how much did you get from your OTHER JOBS?	
Ask only if q3.01=1		
filter_password > filter_HH > Result_group > Fifteen_years > Pensions		
Pensions_note	In the LAST 1 MONTH did you receive money from (...) ? If does not want to answer, write "-1"  If No, write 0 (zero)	
q6_11 (required)	NIS pension? GYD	
Ask only if q1.04>59		
q6_12 (required)	old age pension? GYD	
Ask only if q1.04>64		
q6_13 (required)	service pension? GYD	
Ask only if q1.04>49		
filter_password > filter_HH > Result_group > Fifteen_years > Pensions_card		
Pensions_note_card	In the LAST 1 MONTH did you receive money from (...) ?	



q6_11b (required)	NIS pension?	0 A) Zero (0)
		1 B) \$1 – \$8,000
		2 C) \$8,001 – \$13,000
		3 D) \$13,001 – \$20,000
		4 E) \$20,001 – \$50,000
		5 F) \$50,001 – \$100,000
		6 G) \$100,001 – \$150,000
		7 H) \$150,001 – \$200,000
		8 I) \$200,001 – \$300,000
		9 J) \$300,001 – \$400,000
		10 K) \$400,001 – \$500,000
		11 L) \$500,001 – \$1,000,000
		12 M) \$1,000,001 or more
		99 N) Does not know
		98 O) Does not want to answer
q6_12b (required)	old age pension?	0 A) Zero (0)
		1 B) \$1 – \$8,000
		2 C) \$8,001 – \$13,000
		3 D) \$13,001 – \$20,000
		4 E) \$20,001 – \$50,000
		5 F) \$50,001 – \$100,000
		6 G) \$100,001 – \$150,000
		7 H) \$150,001 – \$200,000
		8 I) \$200,001 – \$300,000
		9 J) \$300,001 – \$400,000
		10 K) \$400,001 – \$500,000
		11 L) \$500,001 – \$1,000,000
		12 M) \$1,000,001 or more
		99 N) Does not know
		98 O) Does not want to answer
q6_13b (required)	service pension?	0 A) Zero (0)
		1 B) \$1 – \$8,000
		2 C) \$8,001 – \$13,000
		3 D) \$13,001 – \$20,000
		4 E) \$20,001 – \$50,000
		5 F) \$50,001 – \$100,000
		6 G) \$100,001 – \$150,000
		7 H) \$150,001 – \$200,000
		8 I) \$200,001 – \$300,000
		9 J) \$300,001 – \$400,000
		10 K) \$400,001 – \$500,000
		11 L) \$500,001 – \$1,000,000
		12 M) \$1,000,001 or more
		99 N) Does not know
		98 O) Does not want to answer
q6_14 (required) Ask only if q1.05 != 3	6.14. In the LAST 1 MONTH did you receive money from survivors benefits? If nothing write 0 (zero).    GYD	
q6_15 (required)	6.15. In the LAST 1 MONTH did you receive money from public assistance? (i.e. welfare grants, disability grants, invalidity grants, unemployment, etc.) If nothing write 0 (zero).    GYD	
filter_password > filter_HH > Result_group > Fifteen_years > FILTER_35		
Q6_05c	6.05c. In the PAST 3 MONTHS did you receive money from the (...) of a house, land or other property? If nothing write 0 (zero).	
q6_16 (required)	a) Rent	
q6_17 (required)	b) Sale	
filter_password > filter_HH > Result_group > Fifteen_years > FILTER_6MONTHS		
NOTE	NOTE. In the LAST 6 MONTHS did you receive ...? If nothing write 0 (zero).	
q6_18 (required)	d. any alimony, maintenance or child support? GYD	
q6_19 (required)	e. money from friends or relatives out of this household living in Guyana? GYD (in the last 6 months)	
filter_password > filter_HH > Result_group > Fifteen_years > FILTER_36		
q6_20	6.20. In the LAST 6 MONTHS did you receive money from relatives or friends living abroad? If nothing write 0 (zero).	
q6_20a (required)	GYD (in the last 6 months)	

q6_20b (required)	US Dollars (in the last 6 months)	
q6_21 (required) <i>Ask only if q1.04&gt;20</i>	6.21. In the PAST 12 MONTHS did you receive money from financial investments? (i.e. dividends, interest paid on bonds, other investments) <i>If nothing write 0 (zero).&lt;br/&gt; &lt;br/&gt; GYD</i>	
q6_22 (required)	6.22. In the LAST 12 MONTHS did you receive any other income not mentioned before? <i>If nothing write 0 (zero).&lt;br/&gt; &lt;br/&gt; GYD</i>	
q6_23 (required) <i>If 2 ► Telephone number</i>	6.23. In the LAST 6 MONTHS did you receive any products from relatives/friends living abroad?	1 Yes
		2 No
filter_password > filter_HH > Result_group > Q6_06b_group		
q6_24	6.24. If you had to pay for these products, what would be their value?	
q6_24a (required)	GYD	
q6_24b (required)	US Dollars	
telephone_number (required)	Telephone number:	
q6_25 (required) <i>If 1 ► Observations</i>	6.25. INTERVIEWER: Were the questions answered by the individual in question?	1 Yes
		2 No
filter_password > filter_HH > Result_group > BEHALF		
q6_26	6.26. Who answered on behalf of this individual?	
q6_26a (required)	Last name	
q6_26b (required)	First name	
q6_27 (required)	Why he/she could not answer?	
END	END OF INDIVIDUAL INTERVIEW	
obs	Observations	
geopoint (required)	[ENUMERATOR: Collect building's GPS coordinates] <i>Accuracy &lt;= 25 meters</i>	
error_2	Sorry, return and check your answer. Your HOUSEHOLD ID is wrong!!	
error_1	Sorry, return and check your answer. Your ID or/and password is/are wrong!!	